



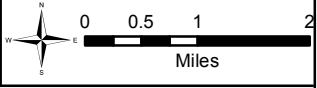
Note: This map is intended for planning purposes only.

Note: Fish and wildlife habitat areas are shown on "Critical Shoreline Habitat" maps. Sensitive Areas are based on existing County Code, JCC 18.15.

- Legend**
- Jefferson County Boundary
 - County Boundary
 - Reach Breaks
 - Proposed Shoreline Planning Area
 - Critical Aquifer Recharge Area
 - Erosion Hazard
 - Landslide Hazard (WDNR, 2007 and Jefferson County, 1997)
 - Potential Wetlands
 - Frequently Flooded Areas (100-yr Floodplain)
 - Federal Land
 - Roads
 - Waterbodies



File name: Map15_ESA_NE.pdf
 Created/last edited by: AMB
 Date last updated: 06/14/08



Map data are the property of the sources listed below. Inaccuracies may exist, and ESA Adolfson implies no warranties or guarantees regarding any aspect of data depiction.
 SOURCE: Jefferson County GIS, 2005; WDNR, 2007; FEMA, 1998

Note: Shorelines of the state are based on WAC 173-18-200 and 173-20-340, the existing Jefferson County SMP (1989), and on 20 cfs limits from USGS (1998) per Maps 1A and 1B.

