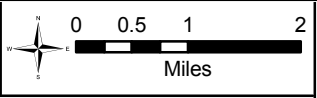


Note: This map is intended for planning purposes only.

- Legend**
- Jefferson County Boundary
 - County Boundary
 - Reach Breaks
 - Proposed Shoreline Planning Area (Lakes, Streams)
- PNPTC mapping (2006)**
- connected lagoon; isolated lagoon
 - salt marsh
 - intertidal wetland
 - Erosion Hazard
 - Landslide Hazard (WDNR, 2007; JC, 1997)
- Shoreline Slope Stability**
- Unstable-recent slide
 - Unstable-old slide
 - Unstable slope
- Geomorphic Classes (Battelle, 2006)**
- barrier
 - embayment
 - high bluff
 - low bank
 - river (estuarine) delta
 - rocky shore
- Roads
 - Waterbodies



File name: Map26_GeomorphicClasses_SE.pdf
 Created/last edited by: AMB
 Date last updated: 06/14/08



Map data are the property of the sources listed below. Inaccuracies may exist, and ESA Adolfson implies no warranties or guarantees regarding any aspect of data depiction.
 SOURCE: Jefferson County GIS, 2005; Battelle, 2006; PNPTC, 2006

Note: Shorelines of the state are based on WAC 173-18-200 and 173-20-340, the existing Jefferson County SMP (1989), and on 20 cfs limits from USGS (1998) per Maps 1A and 1B.