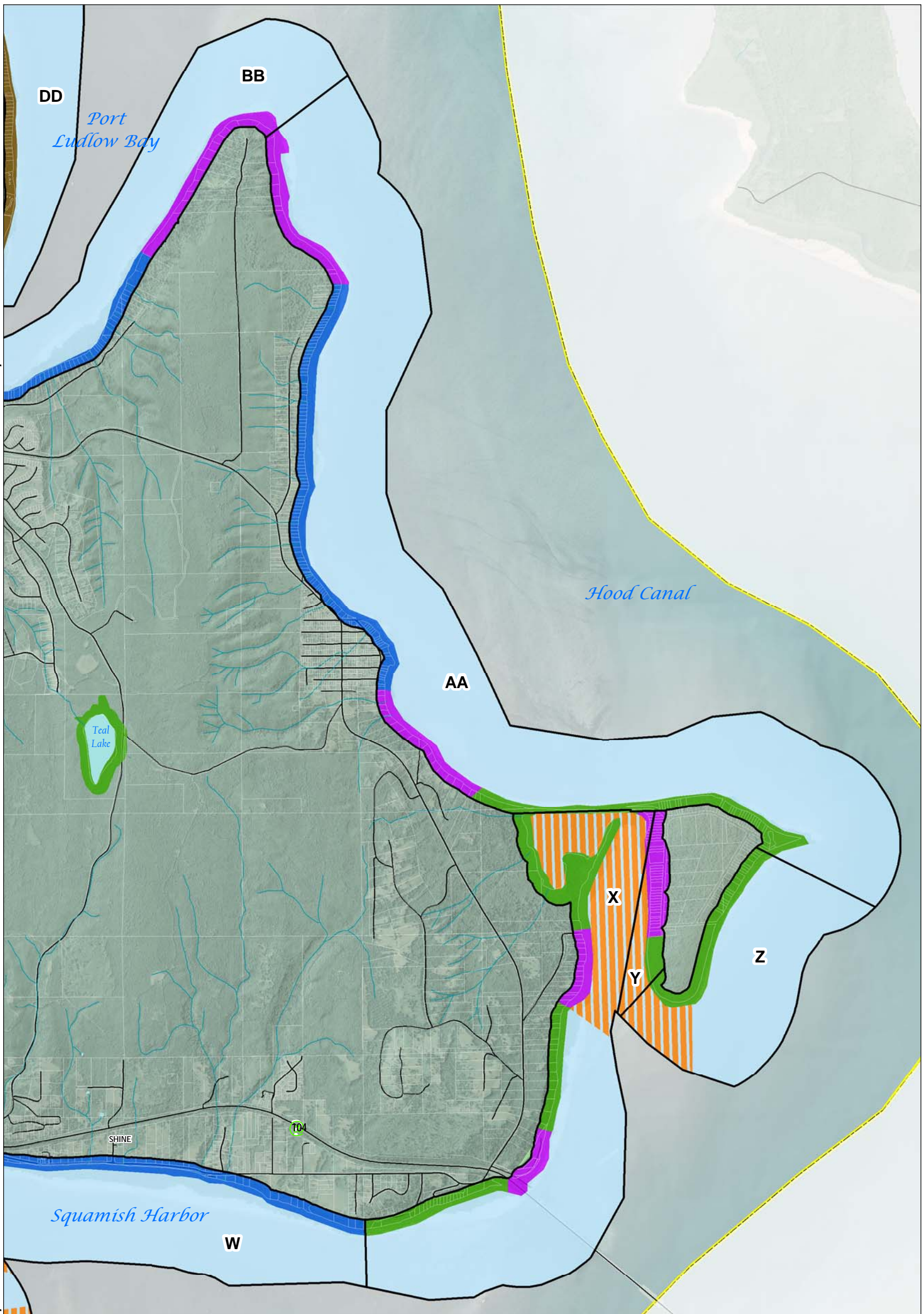


Map # 9. Port Ludlow

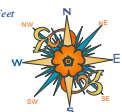
Map # 12. Shine



Map # 13. Paradise Bay
Jefferson County, Washington

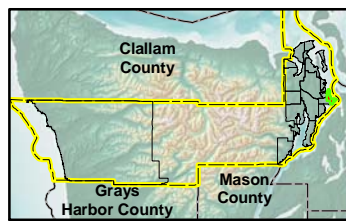
December 7, 2009

File: Q:\MapDocs\DCD\SMP2009\SED_110909_Map13_ParadiseBay.mxd
 Printing Date: Friday, November 20, 2009
 Prepared By: Doug Nolemeier, GISP
 ArcMap Build Number: 9.3.1770
 Coordinate System:
 NAD 1983 StatePlane Washington North FIPS 4601 Feet
 Datum: North American 1983
 * 2009 Jefferson County GIS
DISCLAIMER
 Jefferson County does not attest to the accuracy
 of the data contained herein and makes no
 warranty with respect to its correctness or validity.
 Data contained in this map is limited by
 the method and accuracy of its collection.



Shoreline Environmental Designation		Parcels	
	Aquatic		Road
	Priority Aquatic		Jefferson County
	Natural		Other County Boundary
	Conservancy		National Park
	Shoreline Residential		National Forest
	High Intensity		Wilderness Area
	NA		Wildlife Refuge
	Priority Aquatic		Parks and Recreation
	Marine Shoreline Planning Area		Military Reserve

0 1,000 2,000 4,000 Feet



1:27,000

This map is intended for planning purposes only.

The Official Shoreline Map shows the environment designations that apply to each segment of the shoreline planning area. It does not necessarily identify or depict the precise lateral extent of shoreline jurisdiction or all associated wetlands. The lateral extent of the shoreline jurisdiction at the parcel level shall be determined on a case-by-case basis at the time a shoreline development is proposed. The actual extent of shoreline jurisdiction requires a site-specific evaluation to identify the location of the ordinary high water mark and any associated wetlands.

The County shall maintain a Geographic Information Systems database that depicts the coordinates for locating the upstream extent of shoreline jurisdiction (that is, the location where the mean annual stream flow is at least 20 cubic feet per second). The database shall also show the limits of the floodplain, floodway, and channel migration zones, and such information shall be used, along with site-specific information on the location of the ordinary high water mark and associated wetlands, to determine the lateral extent of shoreline jurisdiction on a parcel-by-parcel basis. The database shall be updated regularly as new information is made available and the public shall have access to the database upon request.