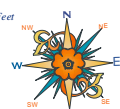


Map # 6. Discovery Bay

Map # 1. Gardiner
Jefferson County, Washington

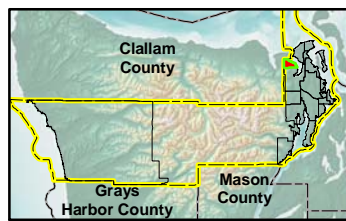
December 7, 2009

File: Q:\MapDocs\DCD\SMP2009\SED_110909_Map1_Gardiner.mxd
 Printing Date: Friday, November 13, 2009
 Prepared By: Doug Nolemeis: GISP
 ArcMap Build Number: 9.3.1770
 Coordinate System:
 NAD 1983 StatePlane Washington North FIPS 4601 Feet
 Datum: North American 1983
 * 2009 Jefferson County GIS
DISCLAIMER
 Jefferson County does not attest to the accuracy
 of the data contained herein and makes no
 warranty with respect to its correctness or validity.
 Data contained in this map is limited by
 the method and accuracy of its collection.



Shoreline Environmental Designation		Parcels	
	Aquatic		Road
	Priority Aquatic		Jefferson County
	Natural		Other County Boundary
	Conservancy		National Park
	Shoreline Residential		National Forest
	High Intensity		Wilderness Area
	NA		Wildlife Refuge
	Priority Aquatic		Parks and Recreation
	Marine Shoreline Planning Area		Military Reserve

0 0.25 0.5 1 Miles

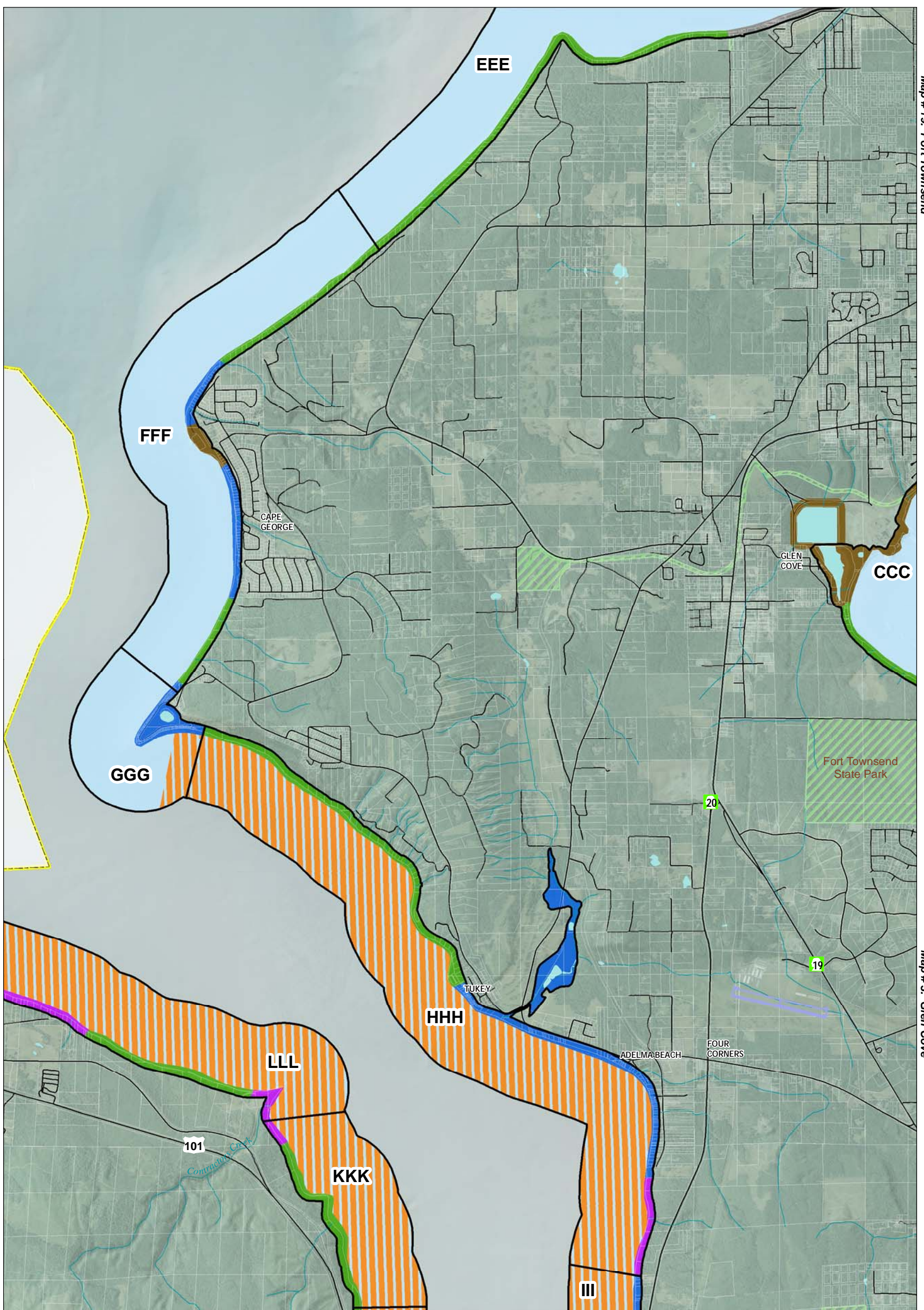


1:32,680

This map is intended for planning purposes only.

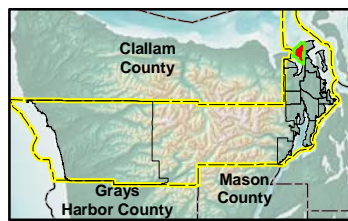
The Official Shoreline Map shows the environment designations that apply to each segment of the shoreline planning area. It does not necessarily identify or depict the precise lateral extent of shoreline jurisdiction or all associated wetlands. The lateral extent of the shoreline jurisdiction at the parcel level shall be determined on a case-by-case basis at the time a shoreline development is proposed. The actual extent of shoreline jurisdiction requires a site-specific evaluation to identify the location of the ordinary high water mark and any associated wetlands.

The County shall maintain a Geographic Information Systems database that depicts the coordinates for locating the upstream extent of shoreline jurisdiction (that is, the location where the mean annual stream flow is at least 20 cubic feet per second). The database shall also show the limits of the floodplain, floodway, and channel migration zones, and such information shall be used, along with site-specific information on the location of the ordinary high water mark and associated wetlands, to determine the lateral extent of shoreline jurisdiction on a parcel-by-parcel basis. The database shall be updated regularly as new information is made available and the public shall have access to the database upon request.



Map # 6. Discovery Bay

Shoreline Environmental Designation		Parcels	
	Aquatic		Road
	Priority Aquatic		Jefferson County
	Natural		Other County Boundary
	Conservancy		National Park
	Shoreline Residential		National Forest
	High Intensity		Wilderness Area
	NA		Wildlife Refuge
	Priority Aquatic		Parks and Recreation
	Marine Shoreline Planning Area		Military Reserve

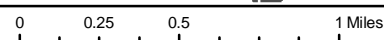
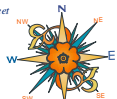


This map is intended for planning purposes only.

The Official Shoreline Map shows the environment designations that apply to each segment of the shoreline planning area. It does not necessarily identify or depict the precise lateral extent of shoreline jurisdiction or all associated wetlands. The lateral extent of the shoreline jurisdiction at the parcel level shall be determined on a case-by-case basis at the time a shoreline development is proposed. The actual extent of shoreline jurisdiction requires a site-specific evaluation to identify the location of the ordinary high water mark and any associated wetlands.

The County shall maintain a Geographic Information Systems database that depicts the coordinates for locating the upstream extent of shoreline jurisdiction (that is, the location where the mean annual stream flow is at least 20 cubic feet per second). The database shall also show the limits of the floodplain, floodway, and channel migration zones, and such information shall be used, along with site-specific information on the location of the ordinary high water mark and associated wetlands, to determine the lateral extent of shoreline jurisdiction on a parcel-by-parcel basis. The database shall be updated regularly as new information is made available and the public shall have access to the database upon request.

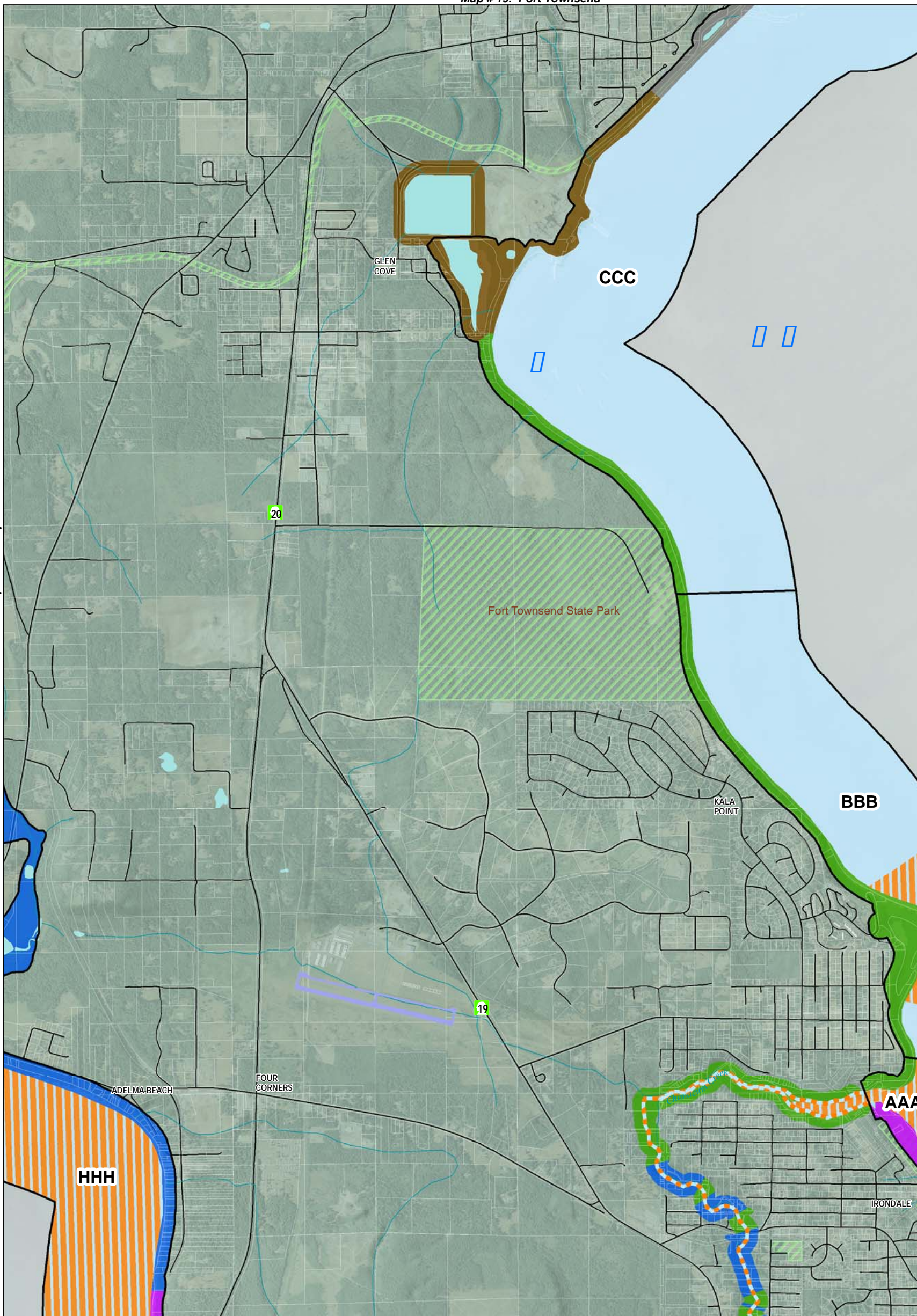
File: Q:\MapDocs\DCD\SMP2009\SED_110909_Map2_Quimper.mxd
 Printing Date: Friday, November 13, 2009
 Prepared By: Doug Nolemeis, GISP
 ArcMap Build Number: 9.3.1770
 Coordinate System:
 NAD 1983 StatePlane Washington North FIPS 4601 Feet
 Datum: North American 1983
 © 2009 Jefferson County GIS
DISCLAIMER
 Jefferson County does not attest to the accuracy of the data contained herein and makes no warranty with respect to its correctness or validity. Data contained in this map is limited by the method and accuracy of its collection.



1:38,000



Map # 19. Port Townsend

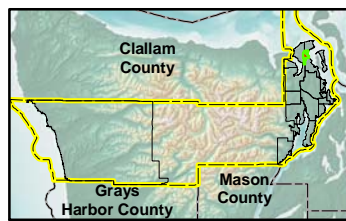


Map # 2. Quimper

Map # 6. Discovery Bay

Map # 4. Tri-Area

Shoreline Environmental Designation		Parcels	
	Aquatic		Road
	Priority Aquatic		Jefferson County
	Natural		Other County Boundary
	Conservancy		National Park
	Shoreline Residential		National Forest
	High Intensity		Wilderness Area
	NA		Wildlife Refuge
	Priority Aquatic		Parks and Recreation
	Marine Shoreline Planning Area		Military Reserve

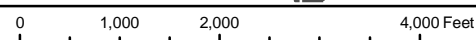
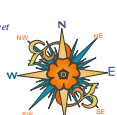


This map is intended for planning purposes only.

The Official Shoreline Map shows the environment designations that apply to each segment of the shoreline planning area. It does not necessarily identify or depict the precise lateral extent of shoreline jurisdiction or all associated wetlands. The lateral extent of the shoreline jurisdiction at the parcel level shall be determined on a case-by-case basis at the time a shoreline development is proposed. The actual extent of shoreline jurisdiction requires a site-specific evaluation to identify the location of the ordinary high water mark and any associated wetlands.

The County shall maintain a Geographic Information Systems database that depicts the coordinates for locating the upstream extent of shoreline jurisdiction (that is, the location where the mean annual stream flow is at least 20 cubic feet per second). The database shall also show the limits of the floodplain, floodway, and channel migration zones, and such information shall be used, along with site-specific information on the location of the ordinary high water mark and associated wetlands, to determine the lateral extent of shoreline jurisdiction on a parcel-by-parcel basis. The database shall be updated regularly as new information is made available and the public shall have access to the database upon request.

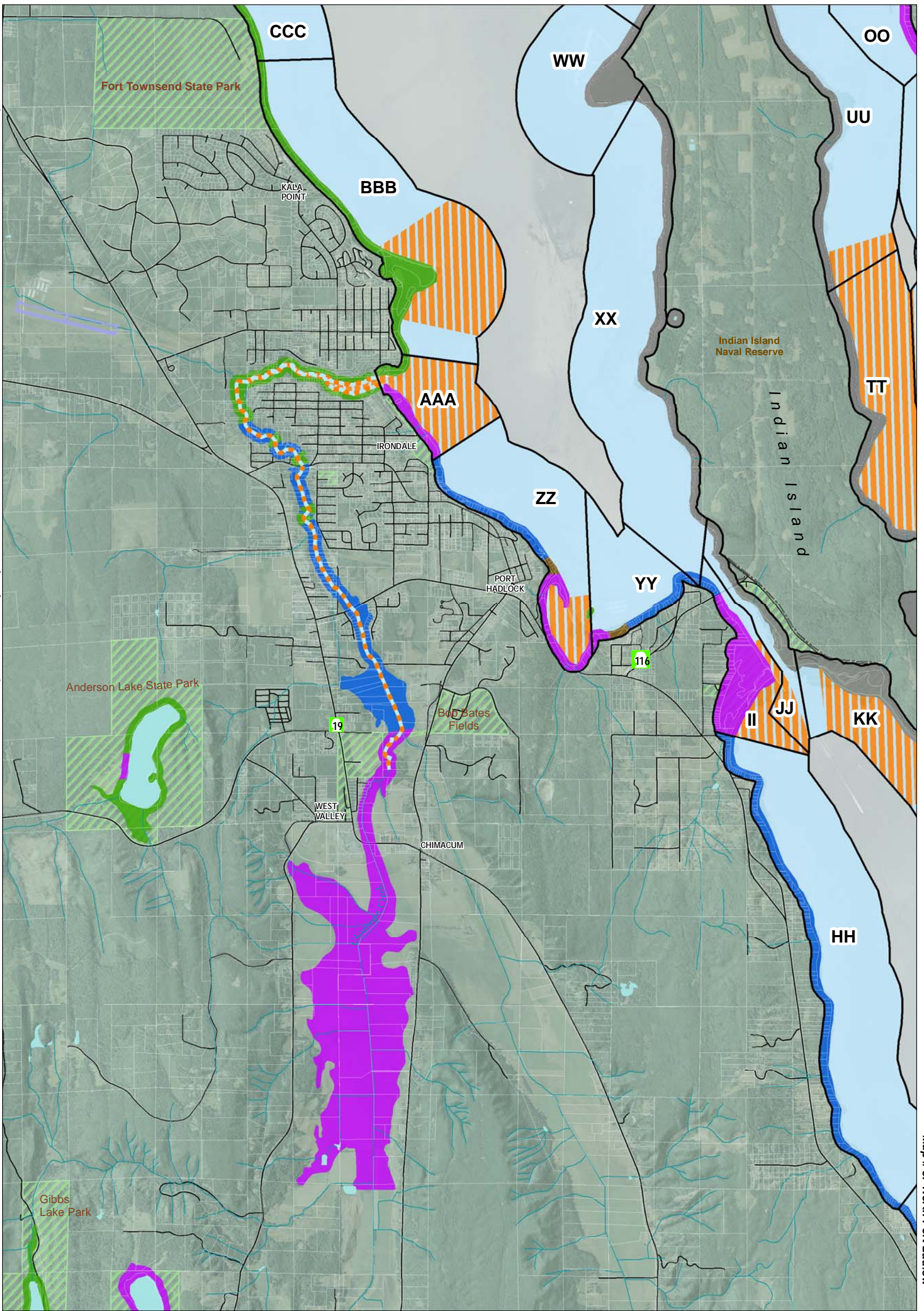
File: Q:\MapDocs\DCD\SMP2009\SED_110909_Map3_GlenCove.mxd
 Printing Date: Friday, November 13, 2009
 Prepared By: Doug Nelsen/GIS
 ArcMap Build Number: 9.3.1770
 Coordinate System:
 NAD 1983 StatePlane Washington North FIPS 4601 Feet
 Datum: North American 1983
 © 2009 Jefferson County GIS
DISCLAIMER
 Jefferson County does not attest to the accuracy of the data contained herein and makes no warranty with respect to its correctness or validity. Data contained in this map is limited by the method and accuracy of its collection.



1:23,000

Map # 3. Glen Cove

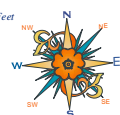
Map # 6. Discovery Bay



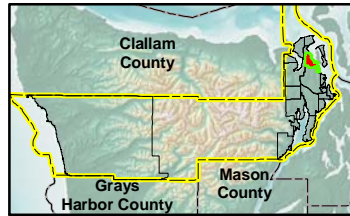
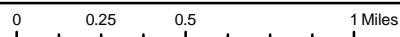
Map # 8. North Port Ludlow

Map # 7. South Chimacum

File: Q:\MapDocs\DCD\SMP2009\SED_110909_Map4_TriArea.mxd
 Printing Date: Friday, November 13, 2009
 Prepared By: Doug Nolemeis, GISP
 ArcMap Build Number: 9.3.1770
 Coordinate System:
 NAD 1983 StatePlane Washington North FIPS 4601 Feet
 Datum: North American 1983
 © 2009 Jefferson County GIS
 DISCLAIMER
 Jefferson County does not attest to the accuracy
 of the data contained herein and makes no
 warranty with respect to its correctness or validity.
 Data contained in this map is limited by
 the method and accuracy of its collection.



Shoreline Environmental Designation		Parcels	
	Aquatic		Road
	Priority Aquatic		Jefferson County
	Natural		Other County Boundary
	Conservancy		National Park
	Shoreline Residential		National Forest
	High Intensity		Wilderness Area
	NA		Wildlife Refuge
	Priority Aquatic		Parks and Recreation
	Marine Shoreline Planning Area		Military Reserve

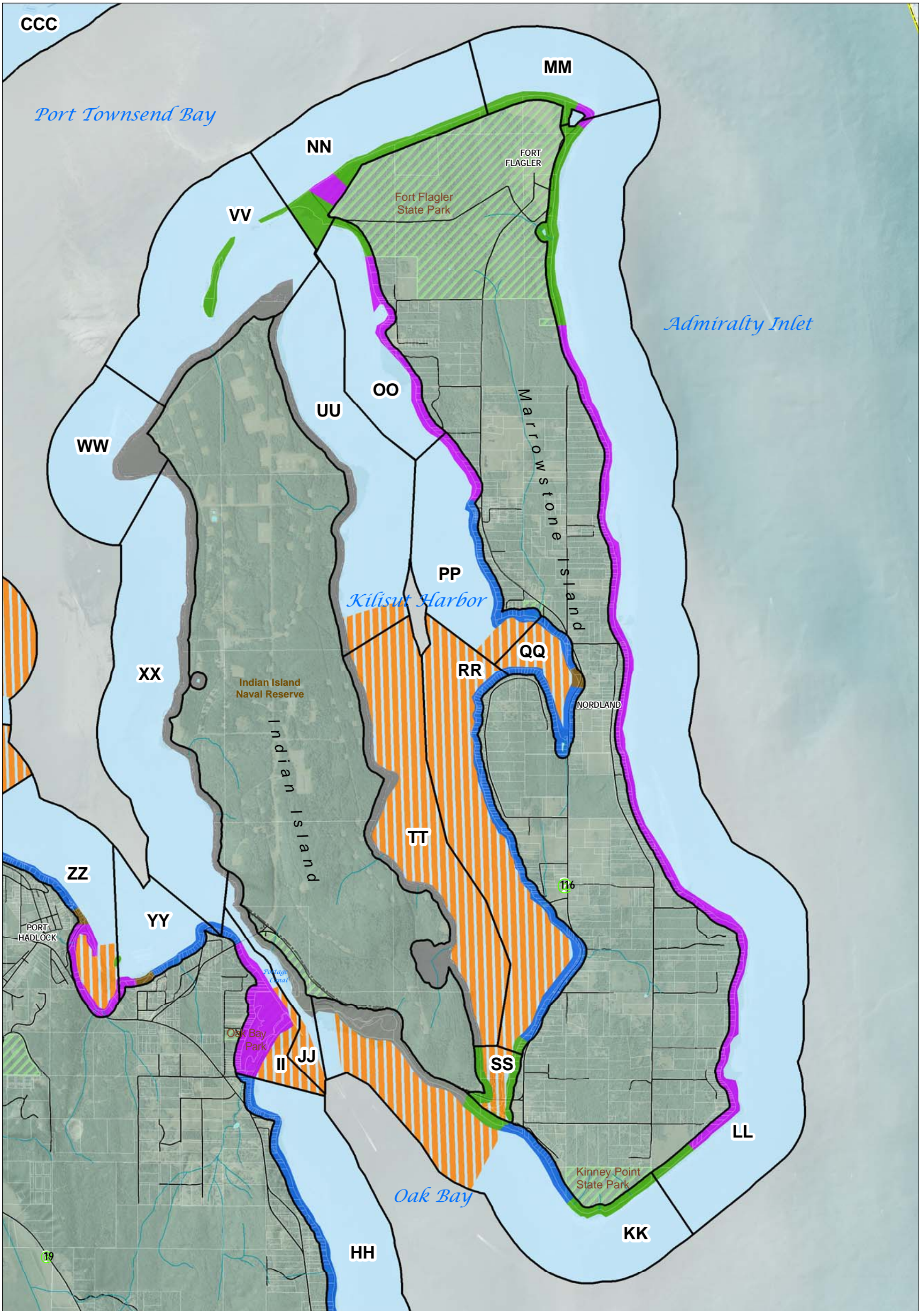


1:36,000

This map is intended for planning purposes only.

The Official Shoreline Map shows the environment designations that apply to each segment of the shoreline planning area. It does not necessarily identify or depict the precise lateral extent of shoreline jurisdiction or all associated wetlands. The lateral extent of the shoreline jurisdiction at the parcel level shall be determined on a case-by-case basis at the time a shoreline development is proposed. The actual extent of shoreline jurisdiction requires a site-specific evaluation to identify the location of the ordinary high water mark and any associated wetlands.

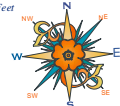
The County shall maintain a Geographic Information Systems database that depicts the coordinates for locating the upstream extent of shoreline jurisdiction (that is, the location where the mean annual stream flow is at least 20 cubic feet per second). The database shall also show the limits of the floodplain, floodway, and channel migration zones, and such information shall be used, along with site-specific information on the location of the ordinary high water mark and associated wetlands, to determine the lateral extent of shoreline jurisdiction on a parcel-by-parcel basis. The database shall be updated regularly as new information is made available and the public shall have access to the database upon request.



Map # 5. Marrowstone
 Jefferson County, Washington

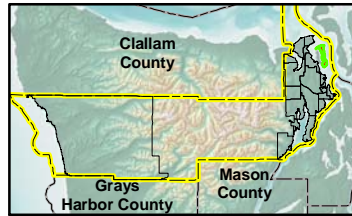
December 7, 2009

File: Q:\MapDocs\DCD\SMP2009\SED_110909_Map5_Marrowstone.mxd
 Printing Date: Friday, November 13, 2009
 Prepared By: Doug Nelsen/GIS
 ArcMap Build Number: 9.3.1770
 Coordinate System:
 NAD 1983 StatePlane Washington North FIPS 4601 Feet
 Datum: North American 1983
 * 2009 Jefferson County GIS
DISCLAIMER
 Jefferson County does not attest to the accuracy
 of the data contained herein and makes no
 warranty with respect to its correctness or validity.
 Data contained in this map is limited by
 the method and accuracy of its collection.



Shoreline Environmental Designation		Parcels	
	Aquatic		Road
	Priority Aquatic		Jefferson County
	Natural		Other County Boundary
	Conservancy		National Park
	Shoreline Residential		National Forest
	High Intensity		Wilderness Area
	NA		Wildlife Refuge
	Priority Aquatic		Parks and Recreation
	Marine Shoreline Planning Area		Military Reserve

0 0.25 0.5 1 Miles



1:38,000

This map is intended for planning purposes only.

The Official Shoreline Map shows the environment designations that apply to each segment of the shoreline planning area. It does not necessarily identify or depict the precise lateral extent of shoreline jurisdiction or all associated wetlands. The lateral extent of the shoreline jurisdiction at the parcel level shall be determined on a case-by-case basis at the time a shoreline development is proposed. The actual extent of shoreline jurisdiction requires a site-specific evaluation to identify the location of the ordinary high water mark and any associated wetlands.

The County shall maintain a Geographic Information Systems database that depicts the coordinates for locating the upstream extent of shoreline jurisdiction (that is, the location where the mean annual stream flow is at least 20 cubic feet per second). The database shall also show the limits of the floodplain, floodway, and channel migration zones, and such information shall be used, along with site-specific information on the location of the ordinary high water mark and associated wetlands, to determine the lateral extent of shoreline jurisdiction on a parcel-by-parcel basis. The database shall be updated regularly as new information is made available and the public shall have access to the database upon request.

Map # 1. Gardiner

Map # 2. Quimper

Map # 3. Glen Cove

Map # 4. Tri-Area

Map # 7. South Chimacum

Map # 10. Leland

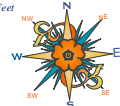
Map # 11. North Toandos Peninsula

Map # 6. Discovery Bay

Jefferson County, Washington

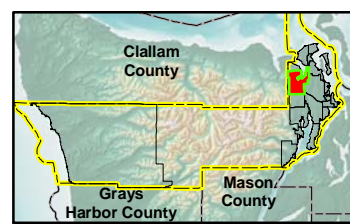
December 7, 2009

File: Q:\MapDocs\DCD\SMP2009\SED_110909_Map6_DiscoveryBay.mxd
Printing Date: Friday, November 13, 2009
Prepared By: Doug Nolemeier, GISP
ArcMap Build Number: 9.3.1770
Coordinate System:
NAD 1983 StatePlane Washington North FIPS 4601 Feet
Datum: North American 1983
© 2009 Jefferson County GIS
DISCLAIMER
Jefferson County does not attest to the accuracy of the data contained herein and makes no warranty with respect to its correctness or validity. Data contained in this map is limited by the method and accuracy of its collection.



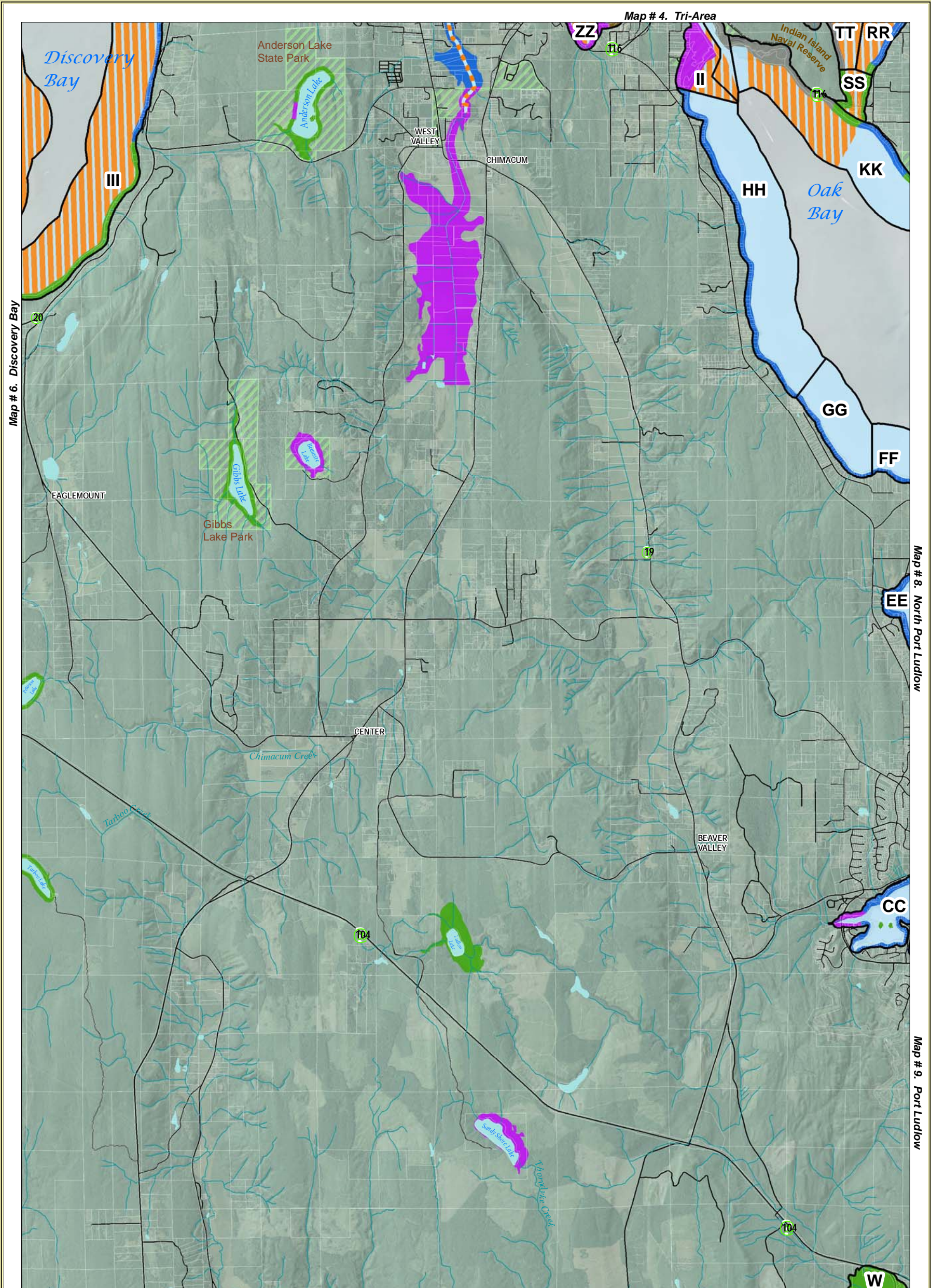
Shoreline Environmental Designation		Parcels	
	Aquatic		Road
	Priority Aquatic		Jefferson County
	Natural		Other County Boundary
	Conservancy		National Park
	Shoreline Residential		National Forest
	High Intensity		Wilderness Area
	NA		Wildlife Refuge
	Priority Aquatic		Parks and Recreation
	Marine Shoreline Planning Area		Military Reserve

0 0.5 1 2 Miles



1:53,000

This map is intended for planning purposes only.
The Official Shoreline Map shows the environment designations that apply to each segment of the shoreline planning area. It does not necessarily identify or depict the precise lateral extent of shoreline jurisdiction or all associated wetlands. The lateral extent of the shoreline jurisdiction at the parcel level shall be determined on a case-by-case basis at the time a shoreline development is proposed. The actual extent of shoreline jurisdiction requires a site-specific evaluation to identify the location of the ordinary high water mark and any associated wetlands.
The County shall maintain a Geographic Information Systems database that depicts the coordinates for locating the upstream extent of shoreline jurisdiction (that is, the location where the mean annual stream flow is at least 20 cubic feet per second). The database shall also show the limits of the floodplain, floodway, and channel migration zones, and such information shall be used, along with site-specific information on the location of the ordinary high water mark and associated wetlands, to determine the lateral extent of shoreline jurisdiction on a parcel-by-parcel basis. The database shall be updated regularly as new information is made available and the public shall have access to the database upon request.



Map # 6. Discovery Bay

Map # 4. Tri-Area

Map # 8. North Port Ludlow

Map # 9. Port Ludlow

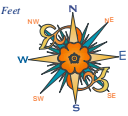
Map # 11. North Toandos Peninsula

Map # 12. Shine

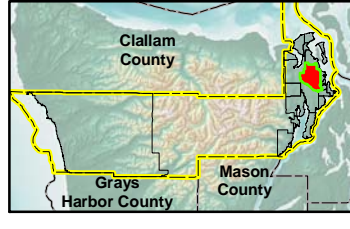
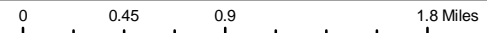
Map # 7. South Chimacum

Jefferson County, Washington
December 7, 2009

File: Q:\MapDocs\DCD\SMP2009\SED_110909_Map7_SouthChimacum.mxd
 Printing Date: Friday, November 13, 2009
 Prepared By: Doug Nolemeis, GISP
 ArcMap Build Number: 9.3.1770
 Coordinate System:
 NAD 1983 StatePlane Washington North FIPS 4601 Feet
 Datum: North American 1983
 * 2009 Jefferson County GIS
 DISCLAIMER
 Jefferson County does not attest to the accuracy of the data contained herein and makes no warranty with respect to its correctness or validity. Data contained in this map is limited by the method and accuracy of its collection.



Shoreline Environmental Designation		Parcels	
	Aquatic		Road
	Priority Aquatic		Jefferson County
	Natural		Other County Boundary
	Conservancy		National Park
	Shoreline Residential		National Forest
	High Intensity		Wilderness Area
	NA		Wildlife Refuge
	Priority Aquatic		Parks and Recreation
	Marine Shoreline Planning Area		Military Reserve



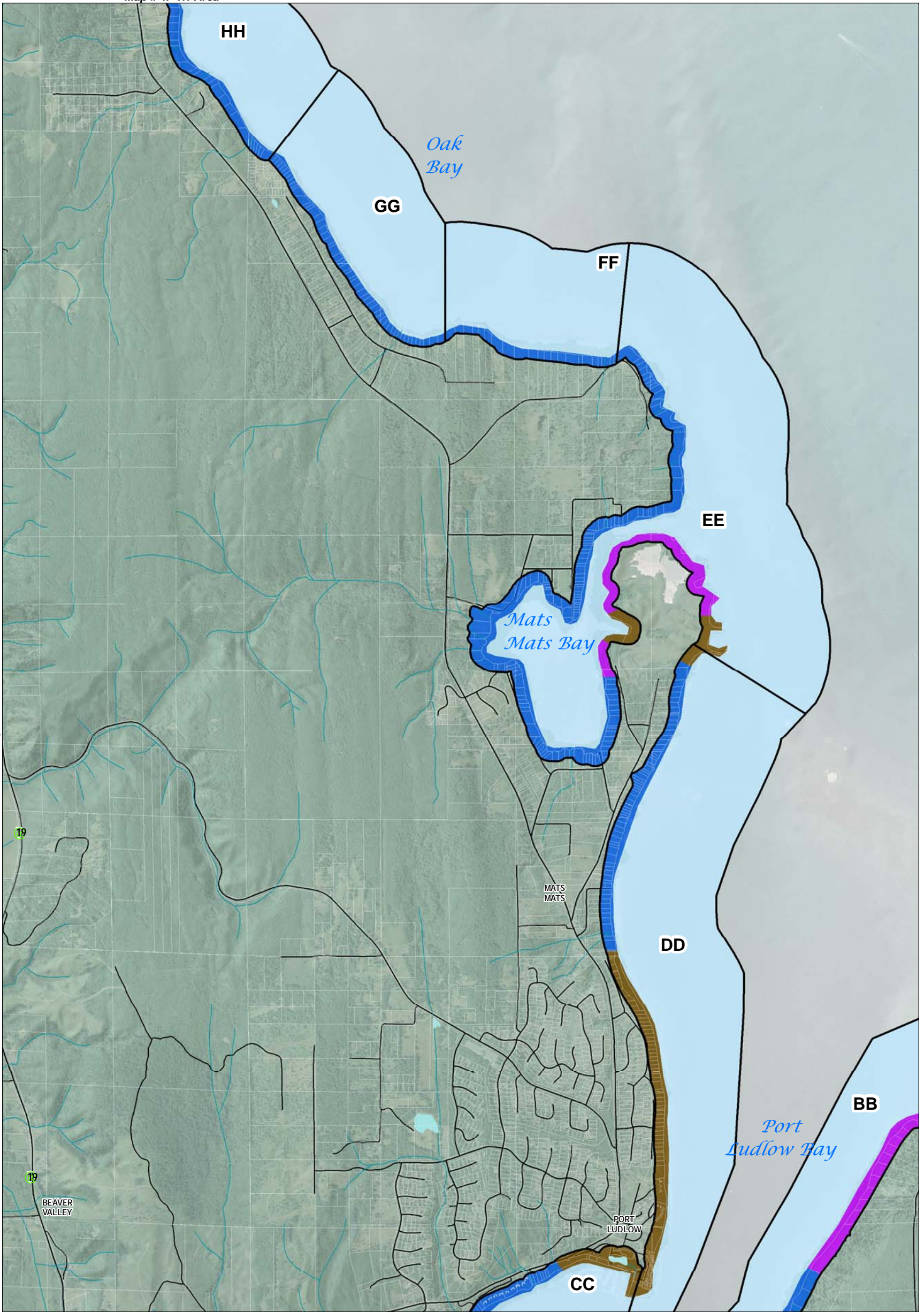
1:54,000

This map is intended for planning purposes only.

The Official Shoreline Map shows the environment designations that apply to each segment of the shoreline planning area. It does not necessarily identify or depict the precise lateral extent of shoreline jurisdiction or all associated wetlands. The lateral extent of the shoreline jurisdiction at the parcel level shall be determined on a case-by-case basis at the time a shoreline development is proposed. The actual extent of shoreline jurisdiction requires a site-specific evaluation to identify the location of the ordinary high water mark and any associated wetlands.

The County shall maintain a Geographic Information Systems database that depicts the coordinates for locating the upstream extent of shoreline jurisdiction (that is, the location where the mean annual stream flow is at least 20 cubic feet per second). The database shall also show the limits of the floodplain, floodway, and channel migration zones, and such information shall be used, along with site-specific information on the location of the ordinary high water mark and associated wetlands, to determine the lateral extent of shoreline jurisdiction on a parcel-by-parcel basis. The database shall be updated regularly as new information is made available and the public shall have access to the database upon request.

Map # 4. Tri-Area



Map # 7. South Chimacum

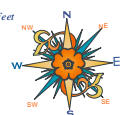
Map # 9. Port Ludlow

Map # 8. North Port Ludlow

Jefferson County, Washington

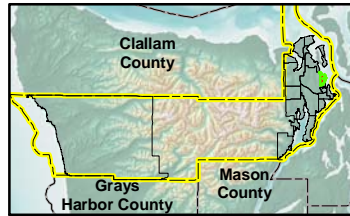
December 7, 2009

File: Q:\MapDocs\DCD\SMP2009\SED_110909_Map8_NorthPortLudlow.mxd
 Printing Date: Friday, November 13, 2009
 Prepared By: Doug Nelsen/GIS
 ArcMap Build Number: 9.3.1770
 Coordinate System:
 NAD 1983 StatePlane Washington North FIPS 4601 Feet
 Datum: North American 1983
 * 2009 Jefferson County GIS
 DISCLAIMER
 Jefferson County does not attest to the accuracy of the data contained herein and makes no warranty with respect to its correctness or validity. Data contained in this map is limited by the method and accuracy of its collection.



Shoreline Environmental Designation		Parcels	
	Aquatic		Road
	Priority Aquatic		Jefferson County
	Natural		Other County Boundary
	Conservancy		National Park
	Shoreline Residential		National Forest
	High Intensity		Wilderness Area
	NA		Wildlife Refuge
	Priority Aquatic		Parks and Recreation
	Marine Shoreline Planning Area		Military Reserve

0 750 1,500 3,000 Feet



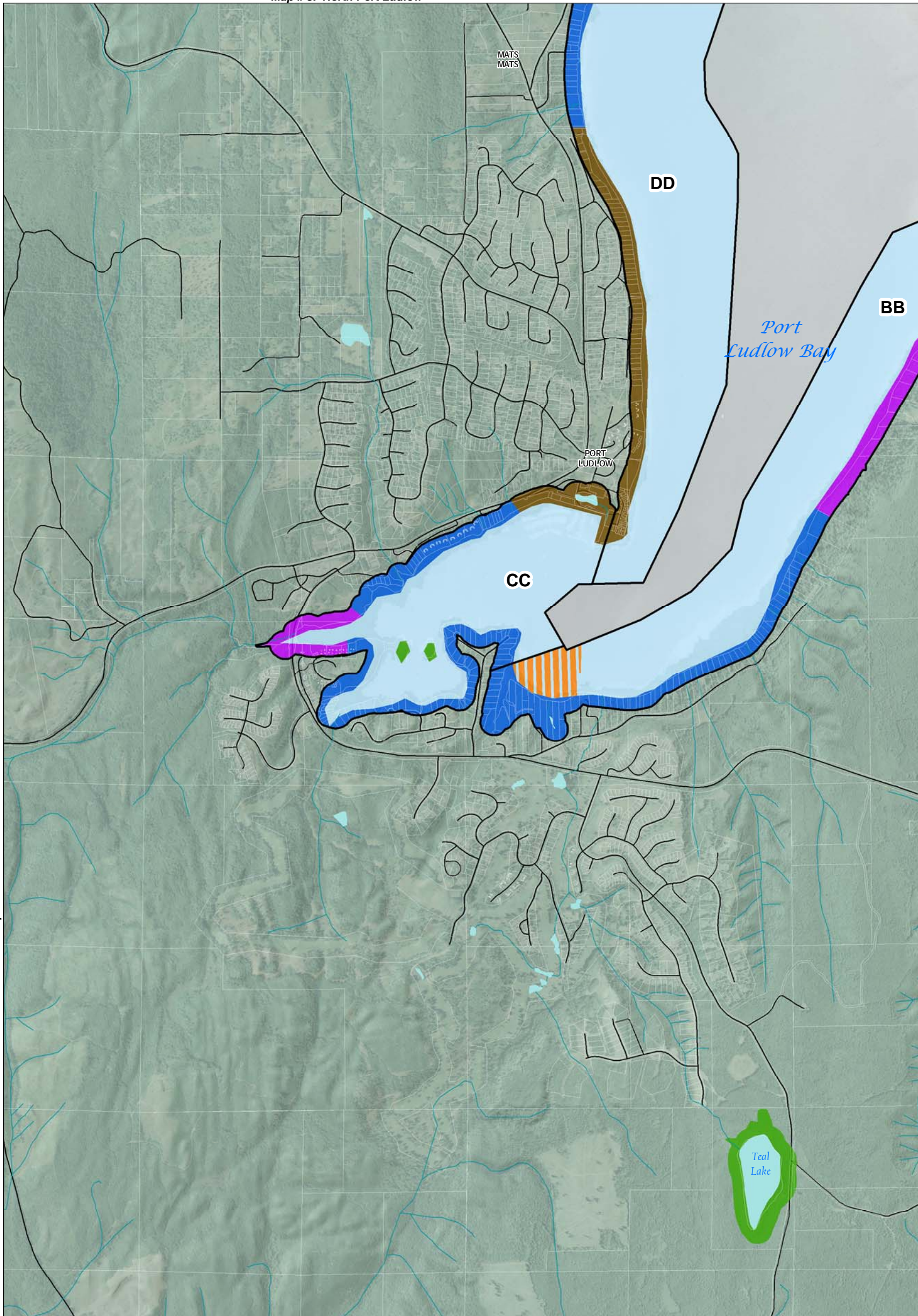
1:24,000

This map is intended for planning purposes only.

The Official Shoreline Map shows the environment designations that apply to each segment of the shoreline planning area. It does not necessarily identify or depict the precise lateral extent of shoreline jurisdiction or all associated wetlands. The lateral extent of the shoreline jurisdiction at the parcel level shall be determined on a case-by-case basis at the time a shoreline development is proposed. The actual extent of shoreline jurisdiction requires a site-specific evaluation to identify the location of the ordinary high water mark and any associated wetlands.

The County shall maintain a Geographic Information Systems database that depicts the coordinates for locating the upstream extent of shoreline jurisdiction (that is, the location where the mean annual stream flow is at least 20 cubic feet per second). The database shall also show the limits of the floodplain, floodway, and channel migration zones, and such information shall be used, along with site-specific information on the location of the ordinary high water mark and associated wetlands, to determine the lateral extent of shoreline jurisdiction on a parcel-by-parcel basis. The database shall be updated regularly as new information is made available and the public shall have access to the database upon request.

Map # 8. North Port Ludlow



Map # 7. South Chimacum

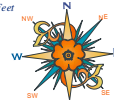
Map # 13. Paradise Bay

Map # 12. Shine

Map # 9. Port Ludlow
Jefferson County, Washington

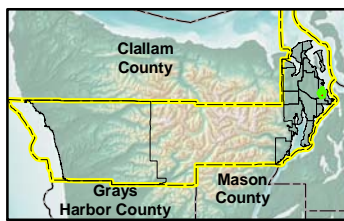
December 7, 2009

File: Q:\MapDocs\DCD\SMP2009\SED_110909_Map9_PortLudlow.mxd
 Printing Date: Monday, November 16, 2009
 Prepared By: Doug Nolemeis, GISP
 ArcMap Build Number: 9.3.1770
 Coordinate System:
 NAD 1983 StatePlane Washington North FIPS 4601 Feet
 Datum: North American 1983
 * 2009 Jefferson County GIS
DISCLAIMER
 Jefferson County does not attest to the accuracy of the data contained herein and makes no warranty with respect to its correctness or validity. Data contained in this map is limited by the method and accuracy of its collection.



Shoreline Environmental Designation		Parcels	
	Aquatic		Road
	Priority Aquatic		Jefferson County
	Natural		Other County Boundary
	Conservancy		National Park
	Shoreline Residential		National Forest
	High Intensity		Wilderness Area
	NA		Wildlife Refuge
	Priority Aquatic		Parks and Recreation
	Marine Shoreline Planning Area		Military Reserve

0 750 1,500 3,000 Feet



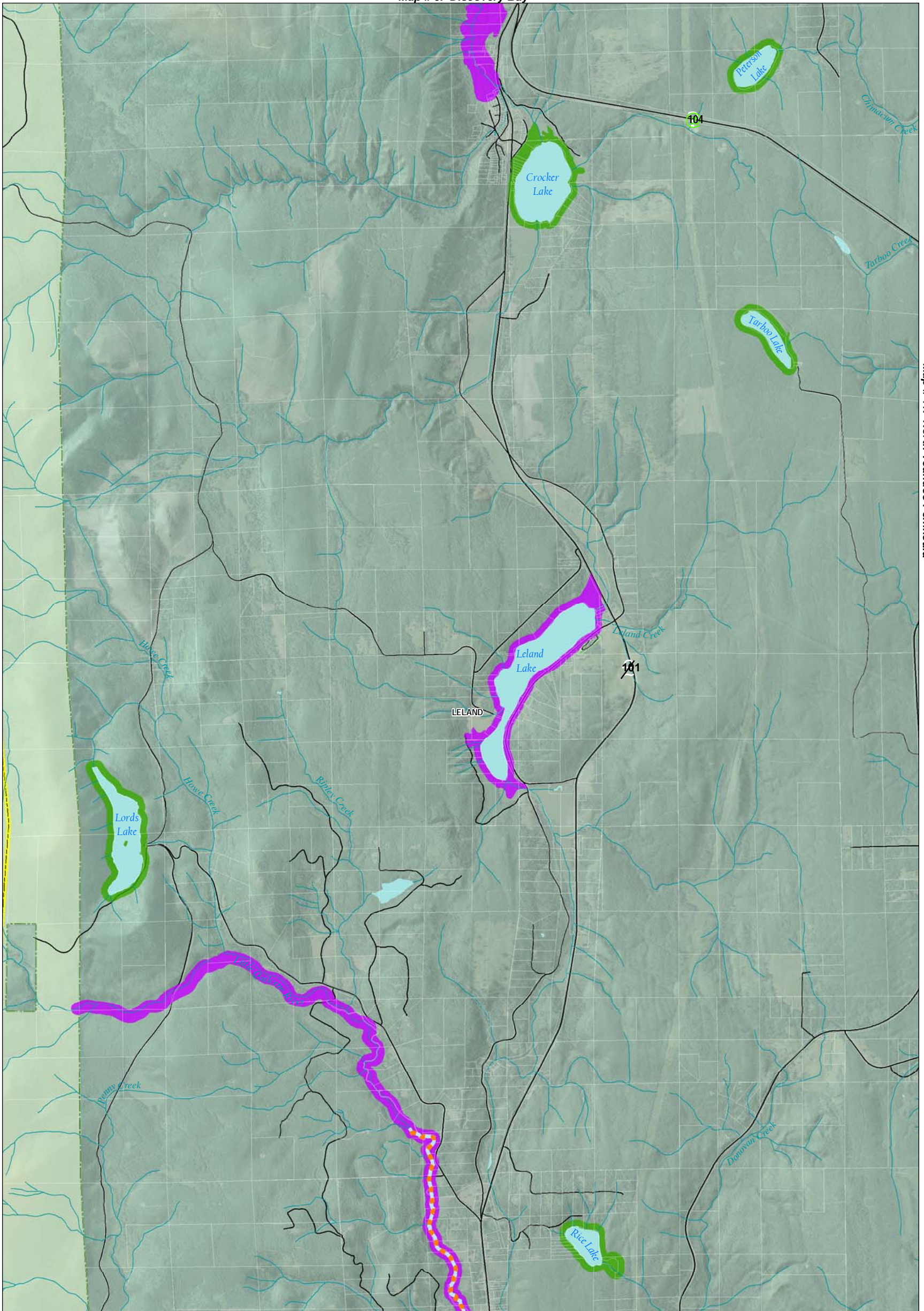
1:20,000

This map is intended for planning purposes only.

The Official Shoreline Map shows the environment designations that apply to each segment of the shoreline planning area. It does not necessarily identify or depict the precise lateral extent of shoreline jurisdiction or all associated wetlands. The lateral extent of the shoreline jurisdiction at the parcel level shall be determined on a case-by-case basis at the time a shoreline development is proposed. The actual extent of shoreline jurisdiction requires a site-specific evaluation to identify the location of the ordinary high water mark and any associated wetlands.

The County shall maintain a Geographic Information Systems database that depicts the coordinates for locating the upstream extent of shoreline jurisdiction (that is, the location where the mean annual stream flow is at least 20 cubic feet per second). The database shall also show the limits of the floodplain, floodway, and channel migration zones, and such information shall be used, along with site-specific information on the location of the ordinary high water mark and associated wetlands, to determine the lateral extent of shoreline jurisdiction on a parcel-by-parcel basis. The database shall be updated regularly as new information is made available and the public shall have access to the database upon request.

Map # 6. Discovery Bay

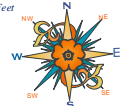


Map # 11. North Toandos Peninsula

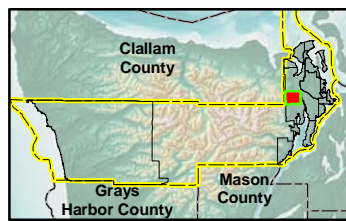
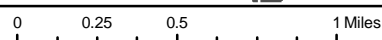
Map # 16. Quilcene

Map # 10. Leland
 Jefferson County, Washington
 December 7, 2009

File: Q:\MapDocs\DCD\SMP\2009\SED_110909_Map10_Leland.mxd
 Printing Date: Monday, November 16, 2009
 Prepared By: Doug Nolemeise, GISP
 ArcMap Build Number: 9.3.1770
 Coordinate System:
 NAD 1983 StatePlane Washington North FIPS 4601 Feet
 Datum: North American 1983
 * 2009 Jefferson County GIS
DISCLAIMER
 Jefferson County does not attest to the accuracy
 of the data contained herein and makes no
 warranty with respect to its correctness or validity.
 Data contained in this map is limited by
 the method and accuracy of its collection.



Shoreline Environmental Designation		Parcels	
	Aquatic		Road
	Priority Aquatic		Jefferson County
	Natural		Other County Boundary
	Conservancy		National Park
	Shoreline Residential		National Forest
	High Intensity		Wilderness Area
	NA		Wildlife Refuge
	Priority Aquatic		Parks and Recreation
	Marine Shoreline Planning Area		Military Reserve



1:38,000

This map is intended for planning purposes only.

The Official Shoreline Map shows the environment designations that apply to each segment of the shoreline planning area. It does not necessarily identify or depict the precise lateral extent of shoreline jurisdiction or all associated wetlands. The lateral extent of the shoreline jurisdiction at the parcel level shall be determined on a case-by-case basis at the time a shoreline development is proposed. The actual extent of shoreline jurisdiction requires a site-specific evaluation to identify the location of the ordinary high water mark and any associated wetlands.

The County shall maintain a Geographic Information Systems database that depicts the coordinates for locating the upstream extent of shoreline jurisdiction (that is, the location where the mean annual stream flow is at least 20 cubic feet per second). The database shall also show the limits of the floodplain, floodway, and channel migration zones, and such information shall be used, along with site-specific information on the location of the ordinary high water mark and associated wetlands, to determine the lateral extent of shoreline jurisdiction on a parcel-by-parcel basis. The database shall be updated regularly as new information is made available and the public shall have access to the database upon request.

Map # 6. Discovery Bay

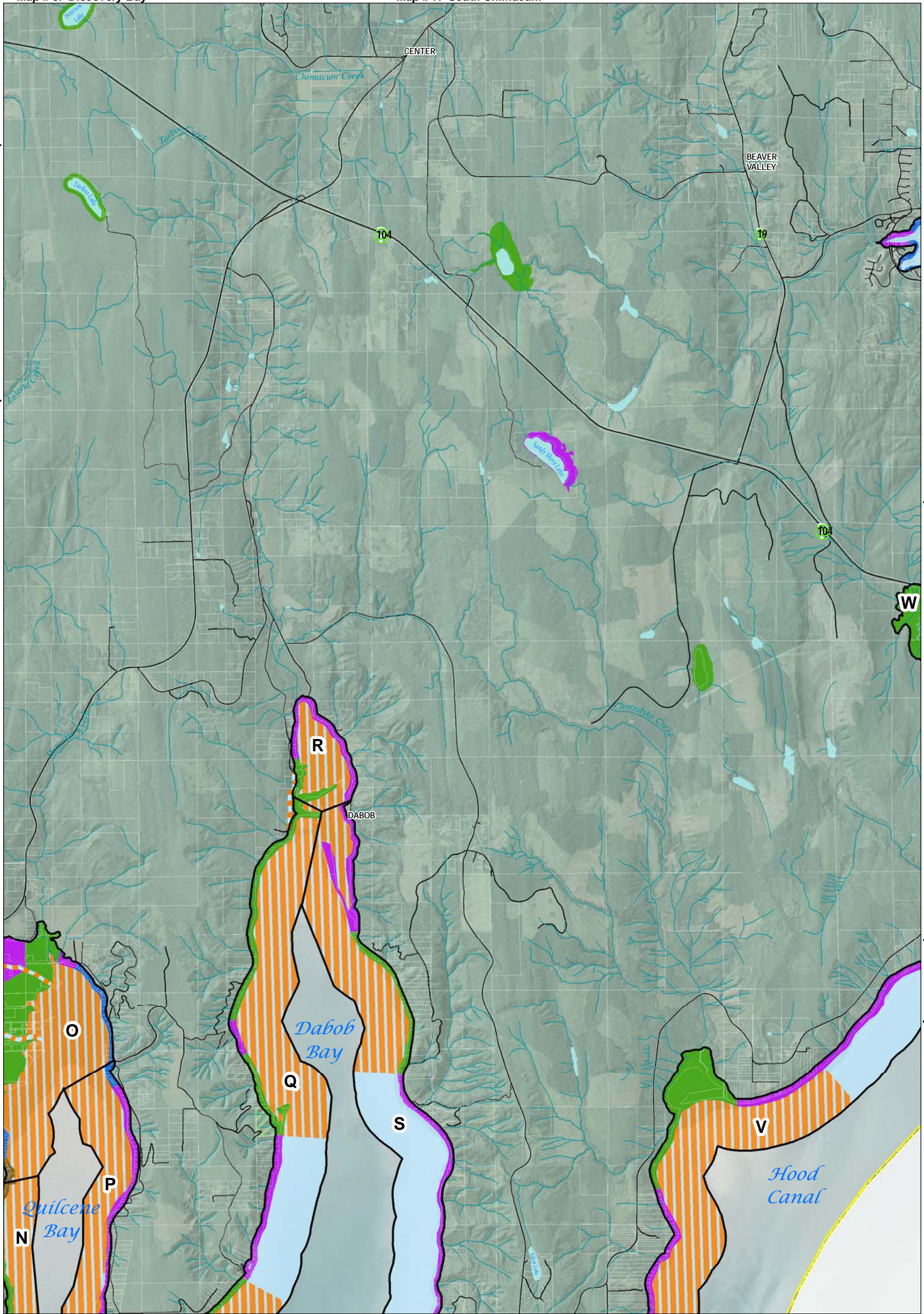
Map # 7. South Chimacum

Map # 10. Leland

Map # 16. Quilcene

Map # 12. Shine

Map # 14. Thorndyke



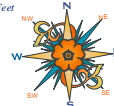
Map # 15. South Toandos Peninsula (Coyle)

Map # 11. North Toandos Peninsula

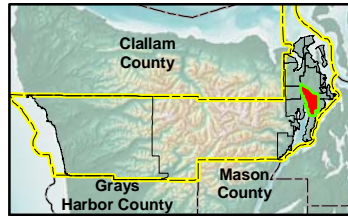
Jefferson County, Washington

December 7, 2009

File: Q:\MapDocs\DCD\SMP2009\SED_110909_Map11_NorthToandos.mxd
 Printing Date: Monday, November 16, 2009
 Prepared By: Doug Nolemeise, GISP
 ArcMap Build Number: 9.3.1770
 Coordinate System:
 NAD 1983 StatePlane Washington North FIPS 4601 Feet
 Datum: North American 1983
 © 2009 Jefferson County GIS
DISCLAIMER
 Jefferson County does not attest to the accuracy of the data contained herein and makes no warranty with respect to its correctness or validity. Data contained in this map is limited by the method and accuracy of its collection.



Shoreline Environmental Designation		Parcels	
	Aquatic		Road
	Priority Aquatic		Jefferson County
	Natural		Other County Boundary
	Conservancy		National Park
	Shoreline Residential		National Forest
	High Intensity		Wilderness Area
	NA		Wildlife Refuge
	Priority Aquatic		Parks and Recreation
	Marine Shoreline Planning Area		Military Reserve



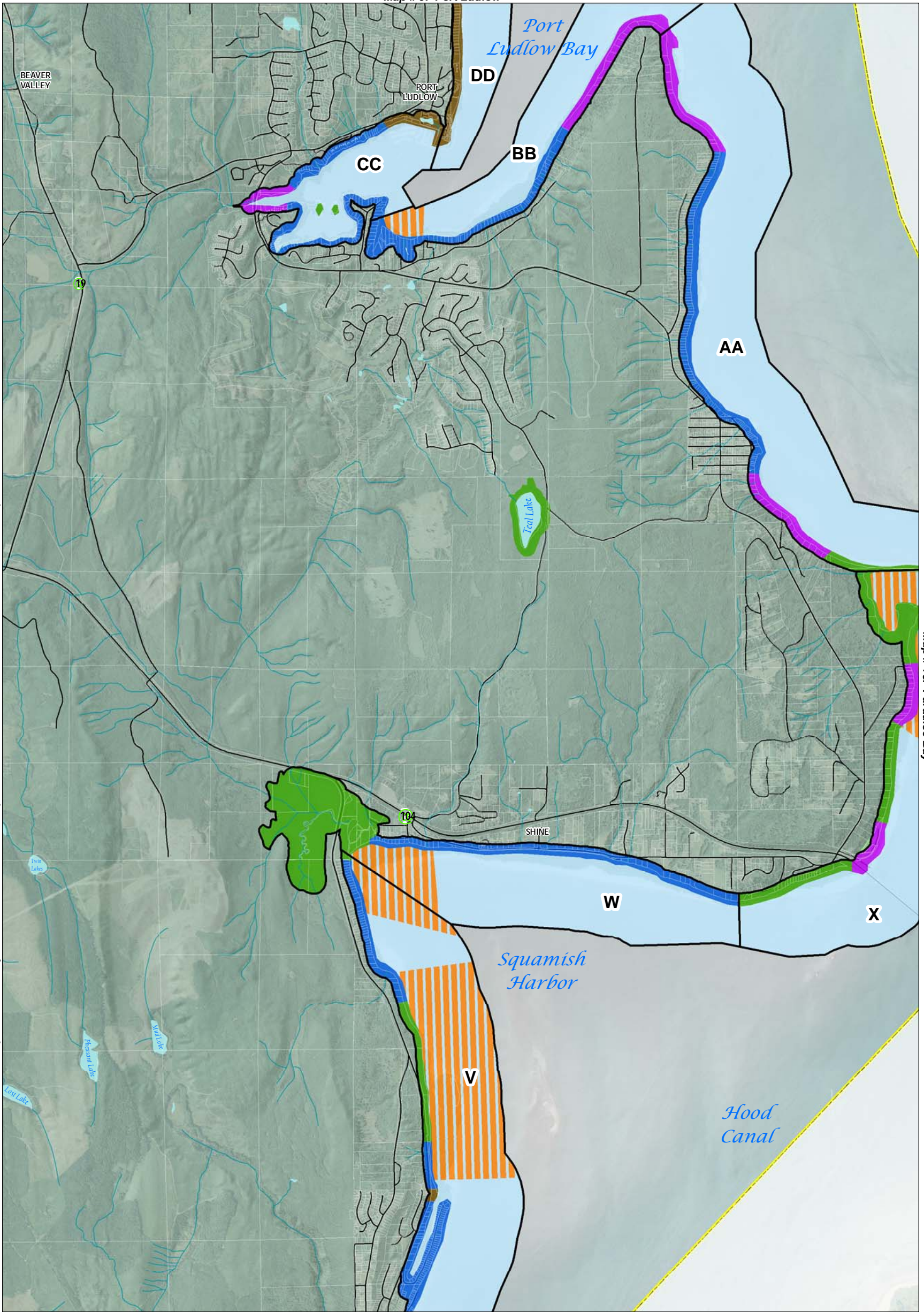
1:56,000

This map is intended for planning purposes only.

The Official Shoreline Map shows the environment designations that apply to each segment of the shoreline planning area. It does not necessarily identify or depict the precise lateral extent of shoreline jurisdiction or all associated wetlands. The lateral extent of the shoreline jurisdiction at the parcel level shall be determined on a case-by-case basis at the time a shoreline development is proposed. The actual extent of shoreline jurisdiction requires a site-specific evaluation to identify the location of the ordinary high water mark and any associated wetlands.

The County shall maintain a Geographic Information Systems database that depicts the coordinates for locating the upstream extent of shoreline jurisdiction (that is, the location where the mean annual stream flow is at least 20 cubic feet per second). The database shall also show the limits of the floodplain, floodway, and channel migration zones, and such information shall be used, along with site-specific information on the location of the ordinary high water mark and associated wetlands, to determine the lateral extent of shoreline jurisdiction on a parcel-by-parcel basis. The database shall be updated regularly as new information is made available and the public shall have access to the database upon request.

Map # 9. Port Ludlow



Map # 7. South Chimacum

Map # 11. North Toandos Peninsula

Map # 14. Thorndyke

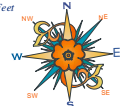
Map # 13. Paradise Bay

Map # 12. Shine

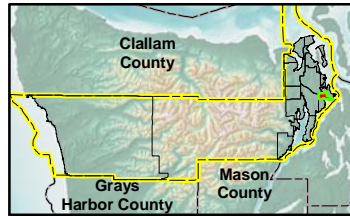
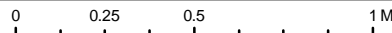
Jefferson County, Washington

December 7, 2009

File: Q:\MapDocs\DCD\SMP2009\SED_110909_Map12_Shine.mxd
 Printing Date: Monday, November 16, 2009
 Prepared By: Doug Nolemeise, GISP
 ArcMap Build Number: 9.3.1770
 Coordinate System:
 NAD 1983 StatePlane Washington North FIPS 4601 Feet
 Datum: North American 1983
 * 2009 Jefferson County GIS
DISCLAIMER
 Jefferson County does not attest to the accuracy
 of the data contained herein and makes no
 warranty with respect to its correctness or validity.
 Data contained in this map is limited by
 the method and accuracy of its collection.



Shoreline Environmental Designation		Parcels	
	Aquatic		Road
	Priority Aquatic		Jefferson County
	Natural		Other County Boundary
	Conservancy		National Park
	Shoreline Residential		National Forest
	High Intensity		Wilderness Area
	NA		Wildlife Refuge
	Priority Aquatic		Parks and Recreation
	Marine Shoreline Planning Area		Military Reserve

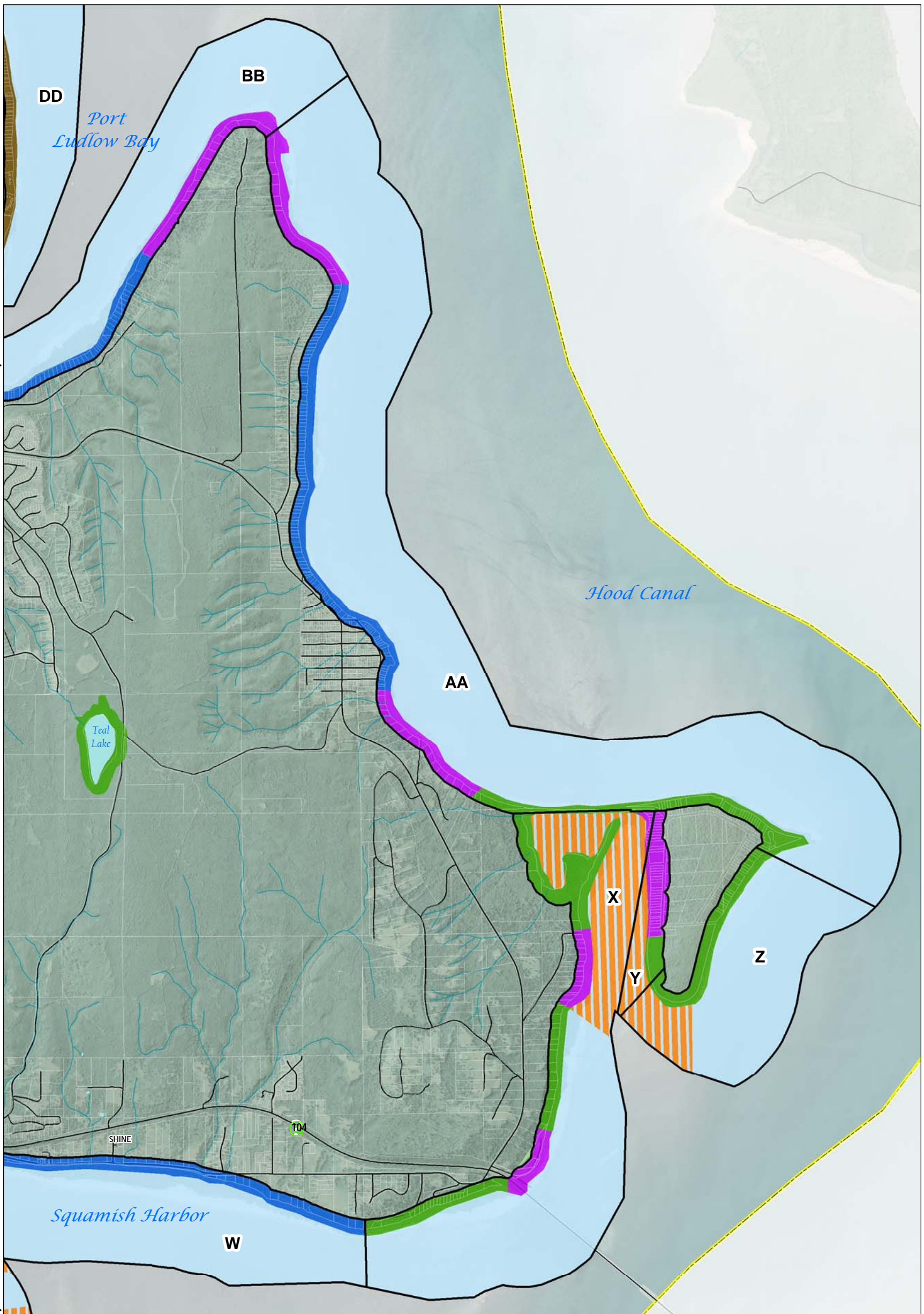


1:34,000

This map is intended for planning purposes only.
 The Official Shoreline Map shows the environment designations that apply to each segment of the shoreline planning area. It does not necessarily identify or depict the precise lateral extent of shoreline jurisdiction or all associated wetlands. The lateral extent of the shoreline jurisdiction at the parcel level shall be determined on a case-by-case basis at the time a shoreline development is proposed. The actual extent of shoreline jurisdiction requires a site-specific evaluation to identify the location of the ordinary high water mark and any associated wetlands.
 The County shall maintain a Geographic Information Systems database that depicts the coordinates for locating the upstream extent of shoreline jurisdiction (that is, the location where the mean annual stream flow is at least 20 cubic feet per second). The database shall also show the limits of the floodplain, floodway, and channel migration zones, and such information shall be used, along with site-specific information on the location of the ordinary high water mark and associated wetlands, to determine the lateral extent of shoreline jurisdiction on a parcel-by-parcel basis. The database shall be updated regularly as new information is made available and the public shall have access to the database upon request.

Map # 9. Port Ludlow

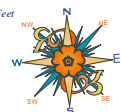
Map # 12. Shine



Map # 13. Paradise Bay
Jefferson County, Washington

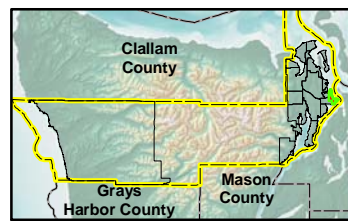
December 7, 2009

File: Q:\MapDocs\DCD\SMP2009\SED_110909_Map13_ParadiseBay.mxd
 Printing Date: Friday, November 20, 2009
 Prepared By: Doug Nolemeier, GISP
 ArcMap Build Number: 9.3.1770
 Coordinate System:
 NAD 1983 StatePlane Washington North FIPS 4601 Feet
 Datum: North American 1983
 * 2009 Jefferson County GIS
DISCLAIMER
 Jefferson County does not attest to the accuracy of the data contained herein and makes no warranty with respect to its correctness or validity. Data contained in this map is limited by the method and accuracy of its collection.



Shoreline Environmental Designation		Parcels	
	Aquatic		Road
	Priority Aquatic		Jefferson County
	Natural		Other County Boundary
	Conservancy		National Park
	Shoreline Residential		National Forest
	High Intensity		Wilderness Area
	NA		Wildlife Refuge
	Priority Aquatic		Parks and Recreation
	Marine Shoreline Planning Area		Military Reserve

0 1,000 2,000 4,000 Feet



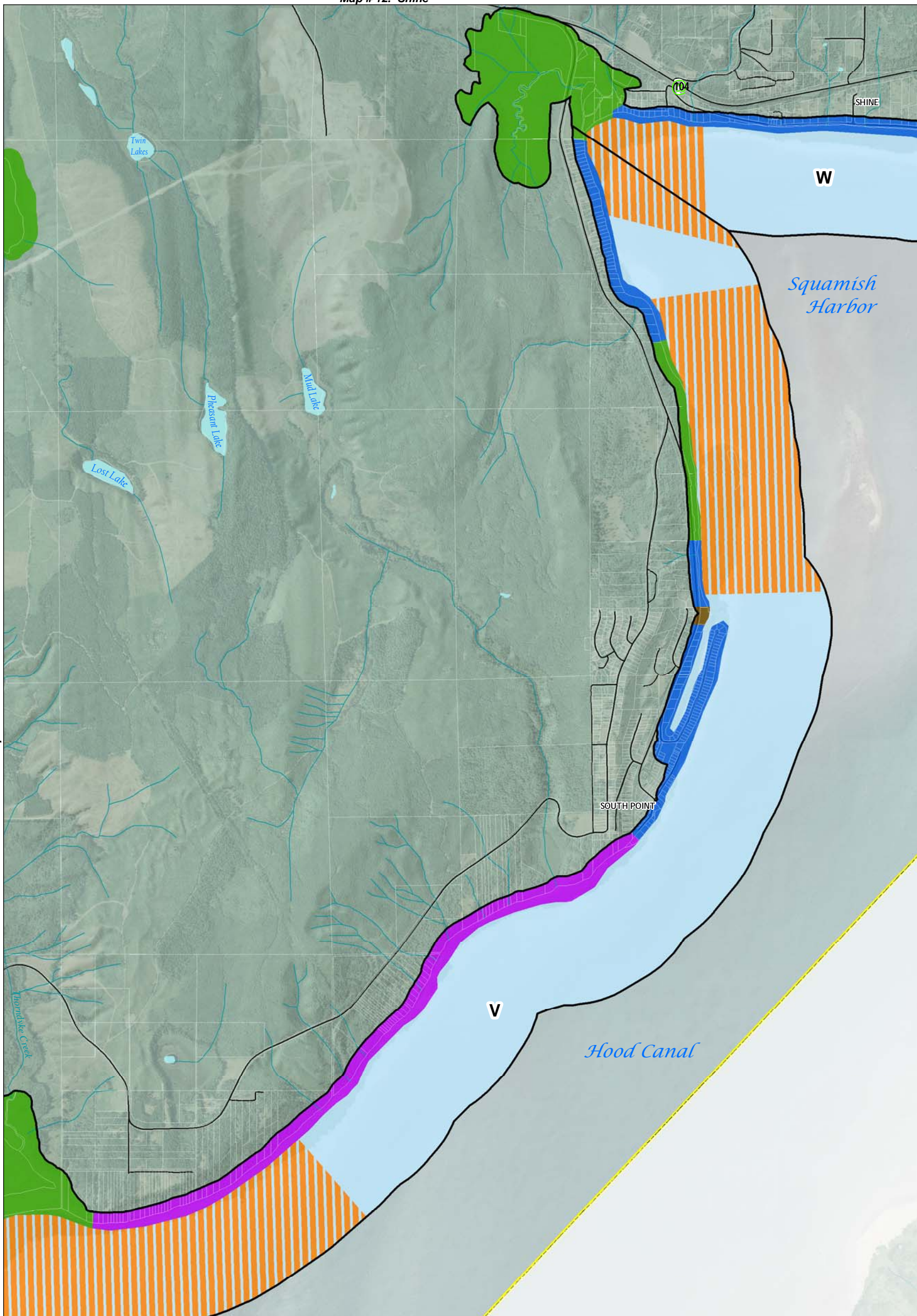
1:27,000

This map is intended for planning purposes only.

The Official Shoreline Map shows the environment designations that apply to each segment of the shoreline planning area. It does not necessarily identify or depict the precise lateral extent of shoreline jurisdiction or all associated wetlands. The lateral extent of the shoreline jurisdiction at the parcel level shall be determined on a case-by-case basis at the time a shoreline development is proposed. The actual extent of shoreline jurisdiction requires a site-specific evaluation to identify the location of the ordinary high water mark and any associated wetlands.

The County shall maintain a Geographic Information Systems database that depicts the coordinates for locating the upstream extent of shoreline jurisdiction (that is, the location where the mean annual stream flow is at least 20 cubic feet per second). The database shall also show the limits of the floodplain, floodway, and channel migration zones, and such information shall be used, along with site-specific information on the location of the ordinary high water mark and associated wetlands, to determine the lateral extent of shoreline jurisdiction on a parcel-by-parcel basis. The database shall be updated regularly as new information is made available and the public shall have access to the database upon request.

Map # 12. Shine

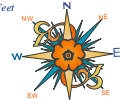


Map # 11. North Toandos Peninsula

Map # 14. Thorndyke
Jefferson County, Washington

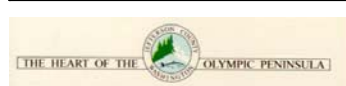
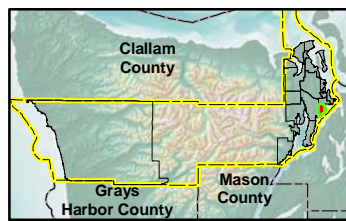
December 7, 2009

File: Q:\MapDocs\DCD\SMP2009\SED_110909_Map14_Thorndyke.mxd
 Printing Date: Monday, November 16, 2009
 Prepared By: Doug Nelsen/GIS
 ArcMap Build Number: 9.3.1770
 Coordinate System:
 NAD 1983 StatePlane Washington North FIPS 4601 Feet
 Datum: North American 1983
 2009 Jefferson County GIS
DISCLAIMER
 Jefferson County does not attest to the accuracy
 of the data contained herein and makes no
 warranty with respect to its correctness or validity.
 Data contained in this map is limited by
 the method and accuracy of its collection.



Shoreline Environmental Designation		Parcels	
	Aquatic		Road
	Priority Aquatic		Jefferson County
	Natural		Other County Boundary
	Conservancy		National Park
	Shoreline Residential		National Forest
	High Intensity		Wilderness Area
	NA		Wildlife Refuge
	Priority Aquatic		Parks and Recreation
	Marine Shoreline Planning Area		Military Reserve

0 1,000 2,000 4,000 Feet



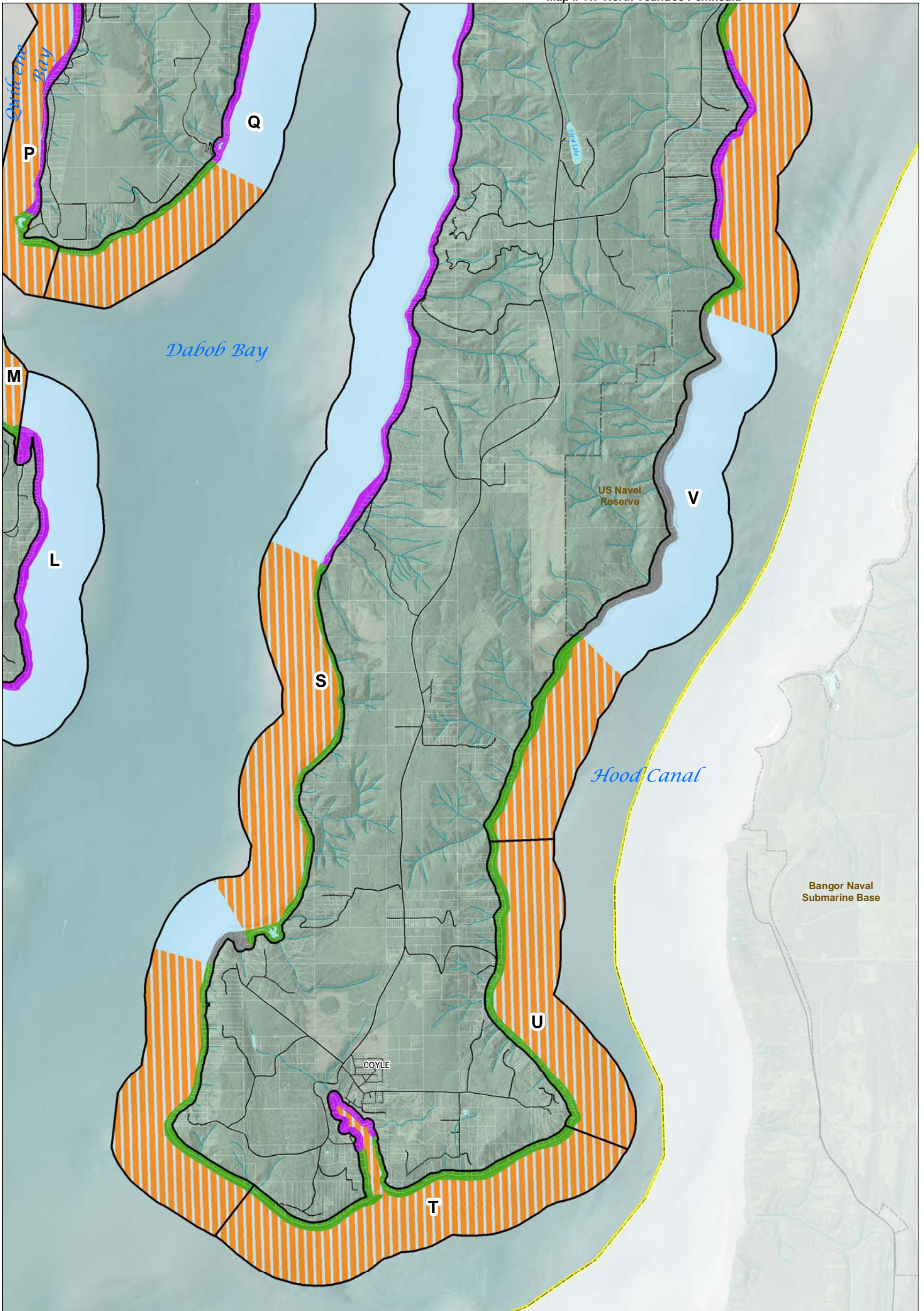
1:24,000

This map is intended for planning purposes only.

The Official Shoreline Map shows the environment designations that apply to each segment of the shoreline planning area. It does not necessarily identify or depict the precise lateral extent of shoreline jurisdiction or all associated wetlands. The lateral extent of the shoreline jurisdiction at the parcel level shall be determined on a case-by-case basis at the time a shoreline development is proposed. The actual extent of shoreline jurisdiction requires a site-specific evaluation to identify the location of the ordinary high water mark and any associated wetlands.

The County shall maintain a Geographic Information Systems database that depicts the coordinates for locating the upstream extent of shoreline jurisdiction (that is, the location where the mean annual stream flow is at least 20 cubic feet per second). The database shall also show the limits of the floodplain, floodway, and channel migration zones, and such information shall be used, along with site-specific information on the location of the ordinary high water mark and associated wetlands, to determine the lateral extent of shoreline jurisdiction on a parcel-by-parcel basis. The database shall be updated regularly as new information is made available and the public shall have access to the database upon request.

Map # 11. North Toandos Peninsula

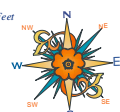


Map # 15. South Toandos Peninsula (Coyle)

Jefferson County, Washington

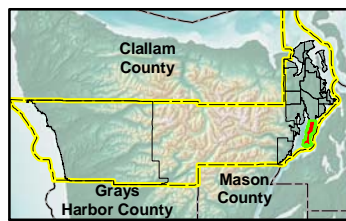
December 7, 2009

File: Q:\MapDocs\DCD\SMP2009\SED_110909_Map15_SouthToandos.mxd
 Printing Date: Thursday, November 19, 2009
 Prepared By: Doug Nolemeire: GISP
 ArcMap Build Number: 9.3.1770
 Coordinate System:
 NAD 1983 StatePlane Washington North FIPS 4601 Feet
 Datum: North American 1983
 * 2009 Jefferson County GIS
DISCLAIMER
 Jefferson County does not attest to the accuracy of the data contained herein and makes no warranty with respect to its correctness or validity. Data contained in this map is limited by the method and accuracy of its collection.



Shoreline Environmental Designation		Parcels	
	Aquatic		Road
	Priority Aquatic		Jefferson County
	Natural		Other County Boundary
	Conservancy		National Park
	Shoreline Residential		National Forest
	High Intensity		Wilderness Area
	NA		Wildlife Refuge
	Priority Aquatic		Parks and Recreation
	Marine Shoreline Planning Area		Military Reserve

0 0.25 0.5 1 Miles



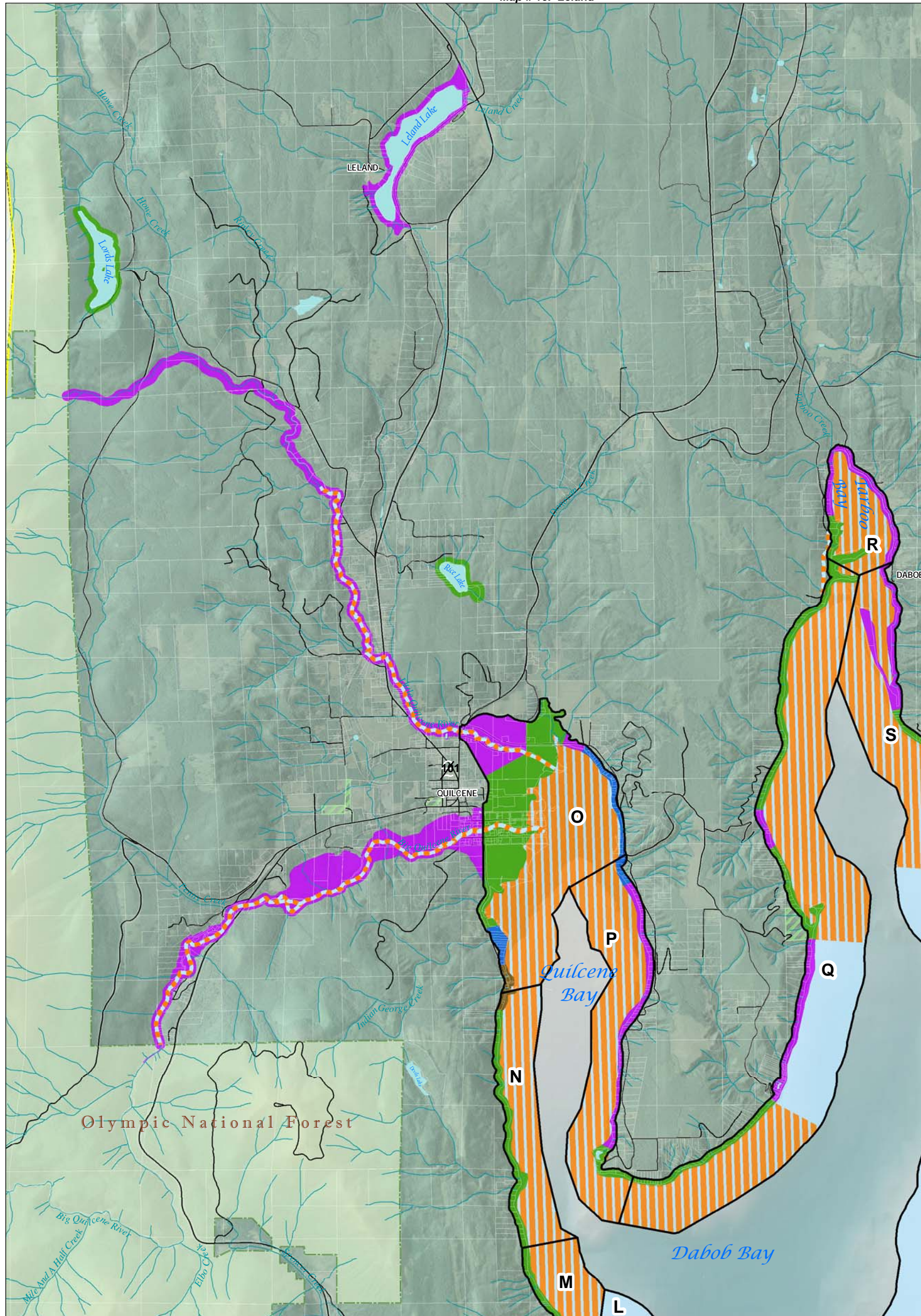
1:45,000

This map is intended for planning purposes only.

The Official Shoreline Map shows the environment designations that apply to each segment of the shoreline planning area. It does not necessarily identify or depict the precise lateral extent of shoreline jurisdiction or all associated wetlands. The lateral extent of the shoreline jurisdiction at the parcel level shall be determined on a case-by-case basis at the time a shoreline development is proposed. The actual extent of shoreline jurisdiction requires a site-specific evaluation to identify the location of the ordinary high water mark and any associated wetlands.

The County shall maintain a Geographic Information Systems database that depicts the coordinates for locating the upstream extent of shoreline jurisdiction (that is, the location where the mean annual stream flow is at least 20 cubic feet per second). The database shall also show the limits of the floodplain, floodway, and channel migration zones, and such information shall be used, along with site-specific information on the location of the ordinary high water mark and associated wetlands, to determine the lateral extent of shoreline jurisdiction on a parcel-by-parcel basis. The database shall be updated regularly as new information is made available and the public shall have access to the database upon request.

Map # 10. Leland

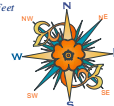


Map # 11. North Toandos Peninsula

Map # 17. Brinnon

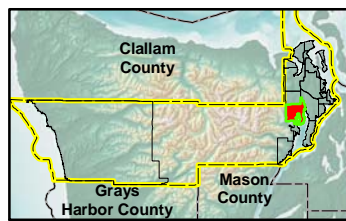
Map # 16. Quilcene
 Jefferson County, Washington
 December 7, 2009

File: Q:\MapDocs\DCD\SMP2009\SED_110909_Map16_Quilcene.mxd
 Printing Date: Thursday, November 19, 2009
 Prepared By: Doug Nelsen/GSP
 ArcMap Build Number: 9.3.1770
 Coordinate System:
 NAD 1983 StatePlane Washington North FIPS 4601 Feet
 Datum: North American 1983
 * 2009 Jefferson County GIS
DISCLAIMER
 Jefferson County does not attest to the accuracy of the data contained herein and makes no warranty with respect to its correctness or validity. Data contained in this map is limited by the method and accuracy of its collection.



Shoreline Environmental Designation		Parcels	
	Aquatic		Road
	Priority Aquatic		Jefferson County
	Natural		Other County Boundary
	Conservancy		National Park
	Shoreline Residential		National Forest
	High Intensity		Wilderness Area
	NA		Wildlife Refuge
	Priority Aquatic		Parks and Recreation
	Marine Shoreline Planning Area		Military Reserve

0 0.25 0.5 1 Miles



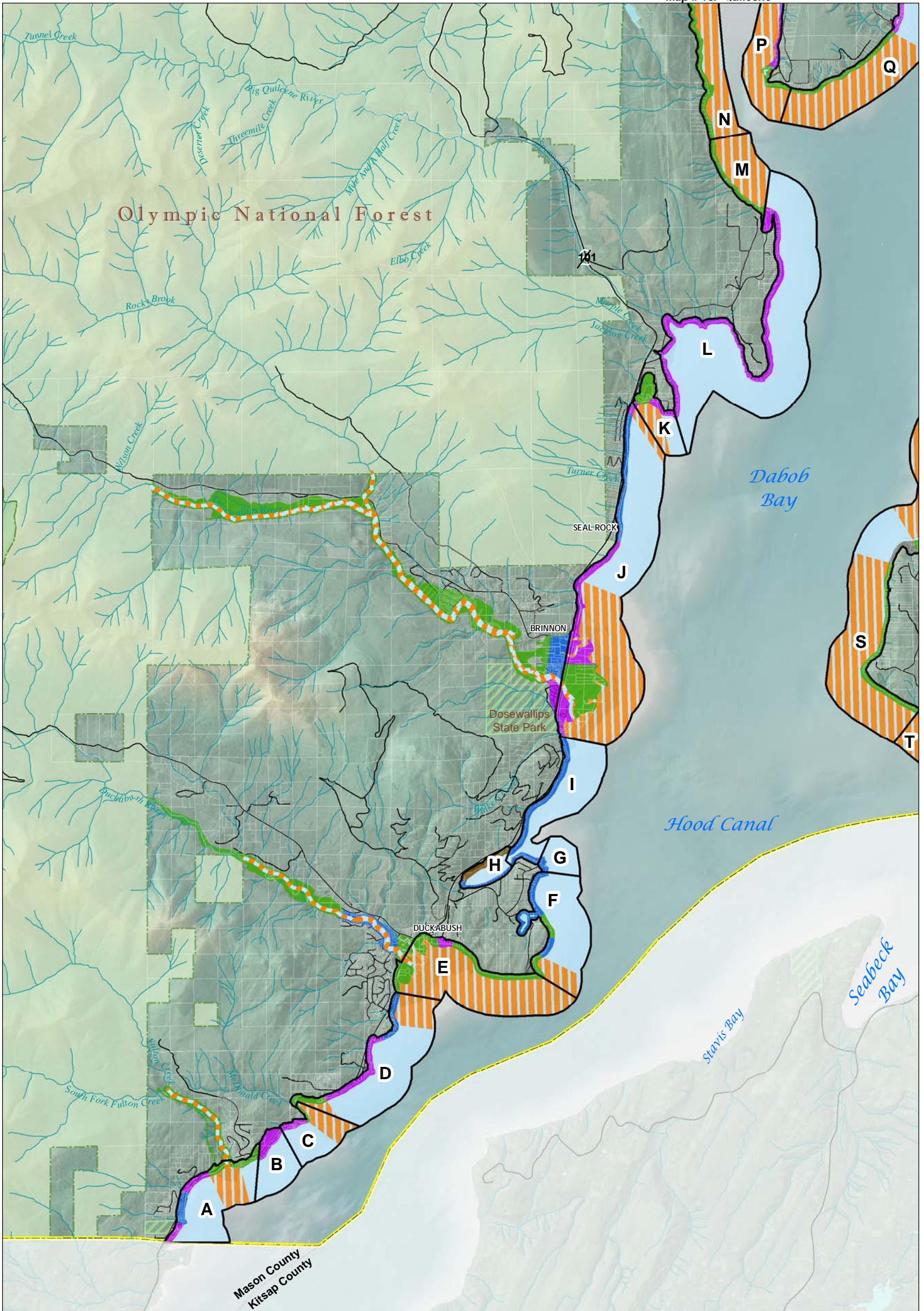
1:50,000

This map is intended for planning purposes only.

The Official Shoreline Map shows the environment designations that apply to each segment of the shoreline planning area. It does not necessarily identify or depict the precise lateral extent of shoreline jurisdiction or all associated wetlands. The lateral extent of the shoreline jurisdiction at the parcel level shall be determined on a case-by-case basis at the time a shoreline development is proposed. The actual extent of shoreline jurisdiction requires a site-specific evaluation to identify the location of the ordinary high water mark and any associated wetlands.

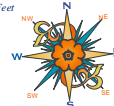
The County shall maintain a Geographic Information Systems database that depicts the coordinates for locating the upstream extent of shoreline jurisdiction (that is, the location where the mean annual stream flow is at least 20 cubic feet per second). The database shall also show the limits of the floodplain, floodway, and channel migration zones, and such information shall be used, along with site-specific information on the location of the ordinary high water mark and associated wetlands, to determine the lateral extent of shoreline jurisdiction on a parcel-by-parcel basis. The database shall be updated regularly as new information is made available and the public shall have access to the database upon request.

Map # 16. Quilcene



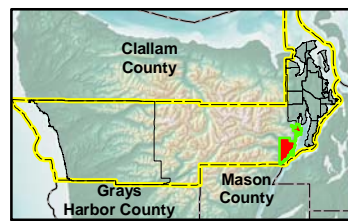
Map # 17. Brinnon
Jefferson County, Washington
December 7, 2009

File: Q:\MapDocs\DCD\SMP2009\SED_110909_Map17_Brinnon.mxd
 Printing Date: Thursday, November 19, 2009
 Prepared By: Doug Nelsen/GSP
 ArcMap Build Number: 9.3.1770
 Coordinate System:
 NAD 1983 StatePlane Washington North FIPS 4601 Feet
 Datum: North American 1983
 * 2009 Jefferson County GIS
DISCLAIMER
 Jefferson County does not attempt to the accuracy of the data contained herein and makes no warranty with respect to its correctness or validity. Data contained in this map is limited by the method and accuracy of its collection.



Shoreline Environmental Designation		Parcels	
	Aquatic		Road
	Priority Aquatic		Jefferson County
	Natural		Other County Boundary
	Conservancy		National Park
	Shoreline Residential		National Forest
	High Intensity		Wilderness Area
	NA		Wildlife Refuge
	Priority Aquatic		Parks and Recreation
	Marine Shoreline Planning Area		Military Reserve

0 0.5 1 2 Miles



1:68,000

This map is intended for planning purposes only.

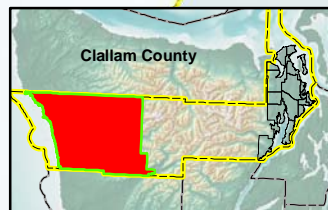
The Official Shoreline Map shows the environment designations that apply to each segment of the shoreline planning area. It does not necessarily identify or depict the precise lateral extent of shoreline jurisdiction or all associated wetlands. The lateral extent of the shoreline jurisdiction at the parcel level shall be determined on a case-by-case basis at the time a shoreline development is proposed. The actual extent of shoreline jurisdiction requires a site-specific evaluation to identify the location of the ordinary high water mark and any associated wetlands.

The County shall maintain a Geographic Information Systems database that depicts the coordinates for locating the upstream extent of shoreline jurisdiction (that is, the location where the mean annual stream flow is at least 20 cubic feet per second). The database shall also show the limits of the floodplain, floodway, and channel migration zones, and such information shall be used, along with site-specific information on the location of the ordinary high water mark and associated wetlands, to determine the lateral extent of shoreline jurisdiction on a parcel-by-parcel basis. The database shall be updated regularly as new information is made available and the public shall have access to the database upon request.

Map #18. West End Jefferson County, Washington

December 7, 2009

- Shoreline Environmental Designation**
- Conservancy
 - Parcels
 - Highway
 - Road
 - Jefferson County
 - Other County Boundary
 - National Park
 - Wilderness Area
 - Wildlife Refuge
 - Parks and Recreation
 - Military Reserve
 - Tribal Lands



0 1 2 4 Miles

This map is intended for planning purposes only.

The Official Shoreline Map shows the environment designations that apply to each segment of the shoreline planning area. It does not necessarily identify or depict the precise lateral extent of shoreline jurisdiction or all associated wetlands. The lateral extent of the shoreline jurisdiction at the parcel level shall be determined on a case-by-case basis at the time a shoreline development is proposed. The actual extent of shoreline jurisdiction requires a site-specific evaluation to identify the location of the ordinary high water mark and any associated wetlands.



1:185,000

The County shall maintain a Geographic Information Systems database that depicts the coordinates for locating the upstream extent of shoreline jurisdiction (that is, the location where the mean annual stream flow is at least 20 cubic feet per second). The database shall also show the limits of the floodplain, floodway, and channel migration zones, and such information shall be used, along with site-specific information on the location of the ordinary high water mark and associated wetlands, to determine the lateral extent of shoreline jurisdiction on a parcel-by-parcel basis. The database shall be updated regularly as new information is made available and the public shall have access to the database upon request.

File: Q:\MapDocs\DCD\SMP2009\SED_110909_Map18_West.mxd
 Printing Date: Thursday, November 19, 2009
 Prepared By: Doug Noltemeyer, GISF
 ArcMap Build Number: 9.3.1770
 Coordinate System:
 NAD 1983 StatePlane Washington North FIPS 4601 Feet
 Datum: North American 1983
 2009 Jefferson County GIS
 DISCLAIMER
 Jefferson County does not attest to the accuracy of the data contained herein and makes no warranty with respect to its correctness or validity. Data contained in this map is limited by the method and accuracy of its collection.

